

THE MARIVUE



Exterior A



Exterior B

1,593 - 1,601 sq. ft.

3 Bedrooms

2 Full Baths

0 - 1 Half Baths

2 Car Garage

Greg and Jane



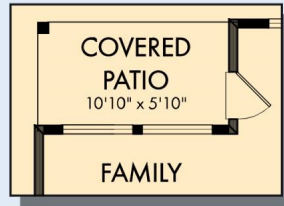
Exceptional service and experience!

We have been fortunate enough to build several new homes and this was by far the best experience that we've encountered. We actually debated whether or not we wanted to go through the home building process again or simply purchase a pre-owned home or a finished new home. So pleased we built! Our Weekley team (sales associate, design consultant and builder) was very professional, courteous, attentive, responsive and pro-active from beginning to end. They've all become our adopted kids! Great overall experience!

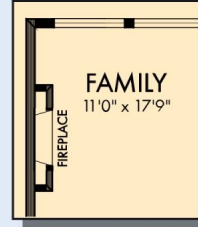
**David Weekley
Homes**

THE MARIVUE

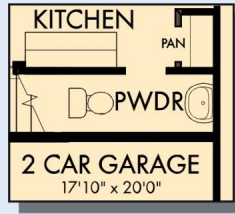
1,593 - 1,601 sq. ft. • 3 Bedrooms • 2 Full Baths • 0 - 1 Half Baths • 2 Car Garage



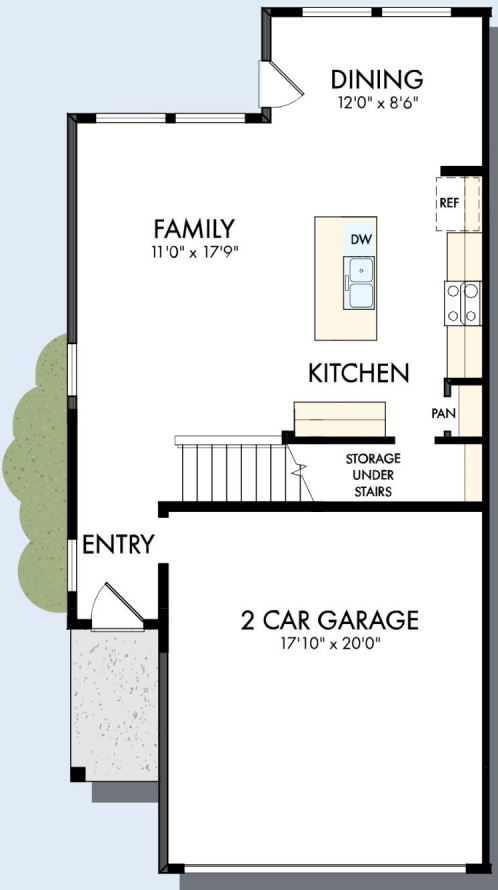
OPTIONAL COVERED PATIO AT DINING



OPTIONAL ELECTRIC WALL FIREPLACE AT FAMILY



OPTIONAL POWDER BATH

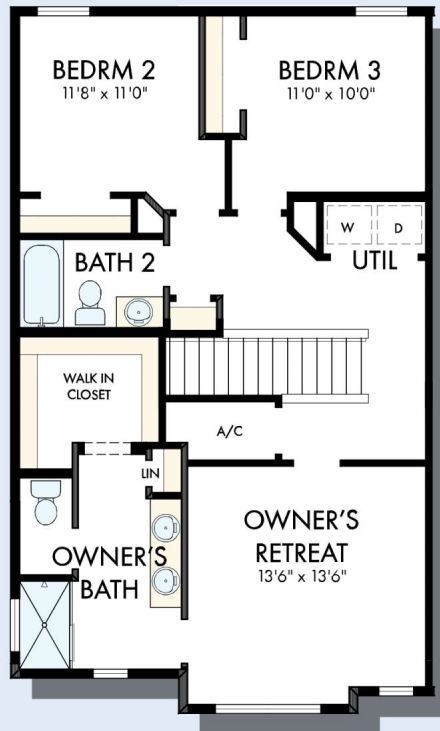


FIRST FLOOR

THE MARIVUE



OPTIONAL SUPER
SHOWER AT
OWNER'S BATH



SECOND FLOOR

For additional options, please visit DavidWeekleyHomes.com

See a David Weekley Homes Sales Consultant for details.
Prices, plans, dimensions, features, specifications, materials,
and availability of homes or communities are subject to
change without notice or obligation. Illustrations are artist's
depictions only and may differ from completed improvements.
Copyright © 2026 David Weekley Homes - All Rights Reserved.
POR, OR

DavidWeekleyHomes.com

