

# THE BEEKMAN



Exterior A

2,559 - 3,115 sq. ft.

3 - 5 Bedrooms

2 - 3 Full Baths

1 Half Bath

2 - 3 Car Garage



Exterior B

**Jordan**



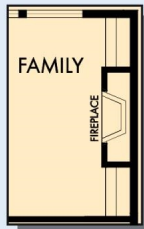
**Greatly exceeded every expectation! A+++!**

The entire experience was excellent from the first day I showed up to look at houses. The whole team came together to provide a truly quality house that I will be living in for years to come. Kajal helped me purchase the house and coordinated all meetings. She was very cheerful and professional at all times and I could tell that she cared about her clients and my family. Jeff and Robbie were builders that always went the extra mile to ensure total customer satisfaction. Jeff was very helpful and I am grateful to his management and know that I will be moving in to a house that is built right with a great attention to detail... Ashley also provided Kajal with assistance whenever Kajal was not available. I could not be happier with everyone involved in building this house. David Weekley is a great company and I would enthusiastically recommend them to others needing a quality house built in the future. Thank you for such a great experience and I hope that this company continues to grow.

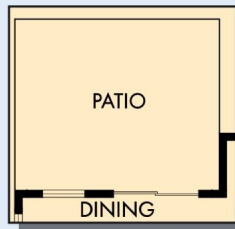
**David Weekley  
Homes**

# THE BEEKMAN

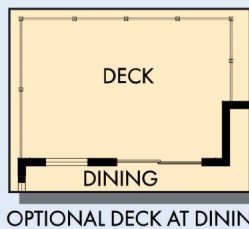
2,559 - 3,115 sq. ft. • 3 - 5 Bedrooms • 2 - 3 Full Baths • 1 Half Bath • 2 - 3 Car Garage



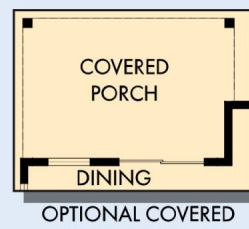
OPTIONAL WALL  
FIREPLACE WITH  
BUILT IN CABINETS  
AT FAMILY



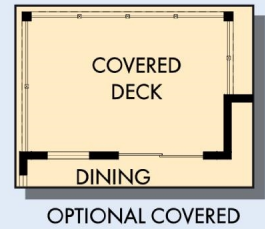
OPTIONAL EXTENDED  
PATIO AT DINING



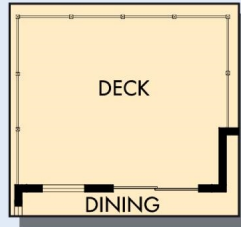
OPTIONAL DECK AT DINING



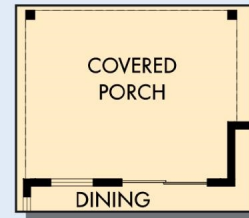
OPTIONAL COVERED  
PORCH AT DINING



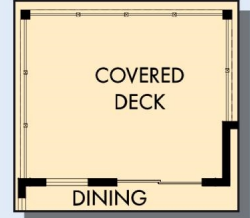
OPTIONAL COVERED  
DECK AT DINING



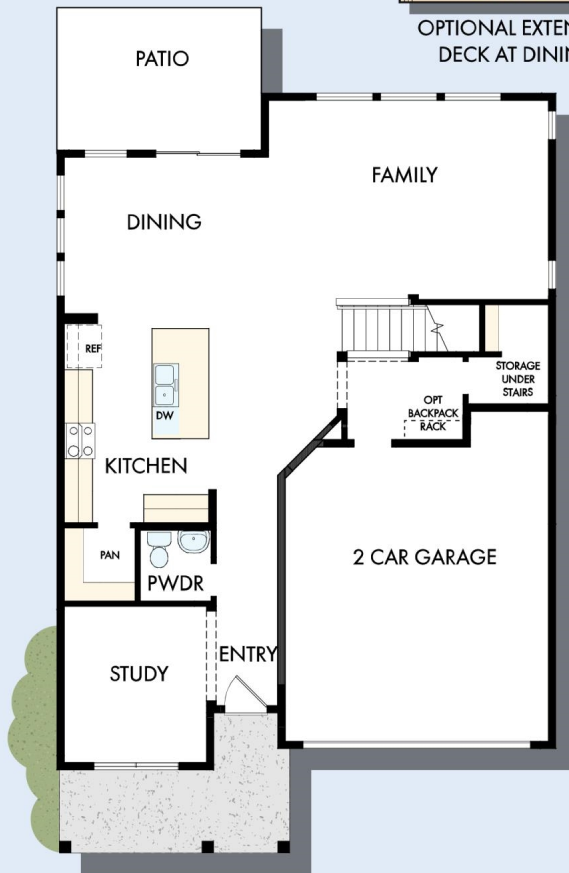
OPTIONAL EXTENDED  
DECK AT DINING



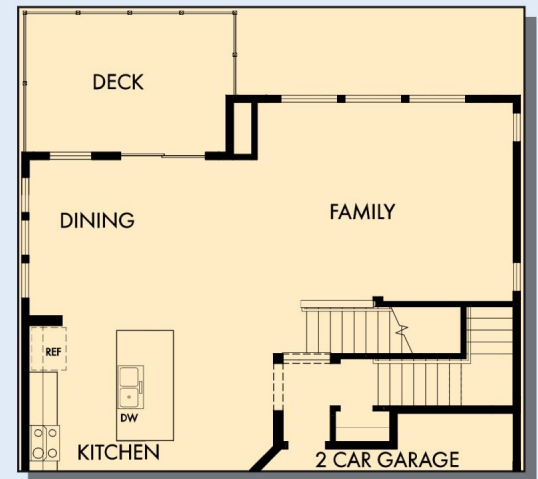
OPTIONAL EXTENDED  
COVERED PORCH AT DINING



OPTIONAL EXTENDED  
COVERED DECK AT DINING



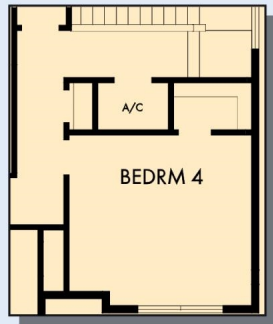
FIRST FLOOR



FIRST FLOOR WITH OPTIONAL BASEMENT



# THE BEEKMAN



OPTIONAL BEDROOM 4  
AT RETREAT



OPTIONAL DROP-IN  
TUB WITH SEPARATE  
SHOWER AT  
OWNER'S BATH



OPTIONAL FREE  
STANDING TUB WITH  
SEPARATE SHOWER AT  
OWNER'S BATH



OPTIONAL SUPER  
SHOWER AT  
OWNER'S BATH

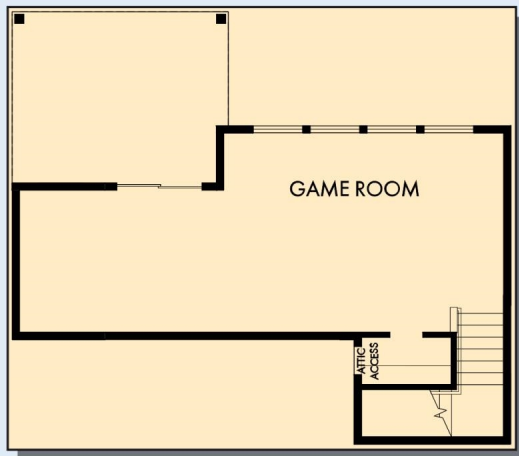


SECOND FLOOR

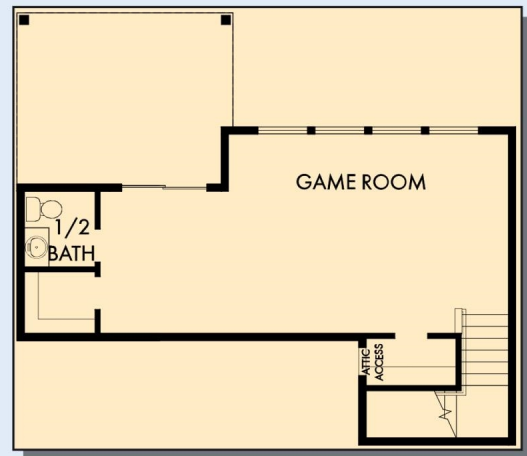
For additional options, please visit [DavidWeekleyHomes.com](http://DavidWeekleyHomes.com)

**DavidWeekleyHomes.com**

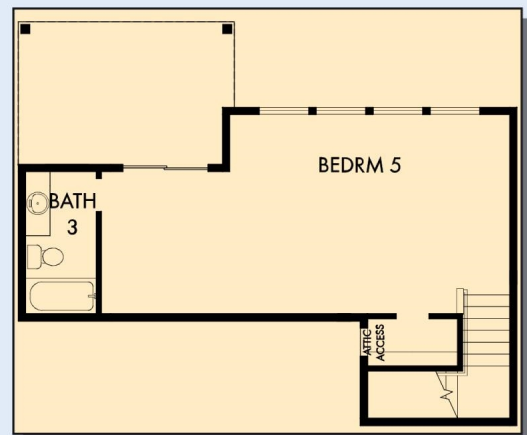
# THE BEEKMAN



OPTIONAL BASEMENT WITH GAME ROOM



OPTIONAL BASEMENT WITH GAME ROOM AND HALF BATH



OPTIONAL BASEMENT WITH BEDROOM 5 AND BATH 3

For additional options, please visit [DavidWeekleyHomes.com](http://DavidWeekleyHomes.com)



See a David Weekley Homes Sales Consultant for details. Prices, plans, dimensions, features, specifications, materials, and availability of homes or communities are subject to change without notice or obligation. Illustrations are artist's depictions only and may differ from completed improvements. Copyright © 2025 David Weekley Homes - All Rights Reserved. POR, OR

## DavidWeekleyHomes.com