

THE WEIDLER



Exterior A

2,255 - 2,261 sq. ft.

4 Bedrooms

3 Full Baths

2 Car Garage



Exterior B

Lauren L.



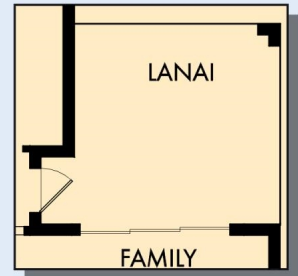
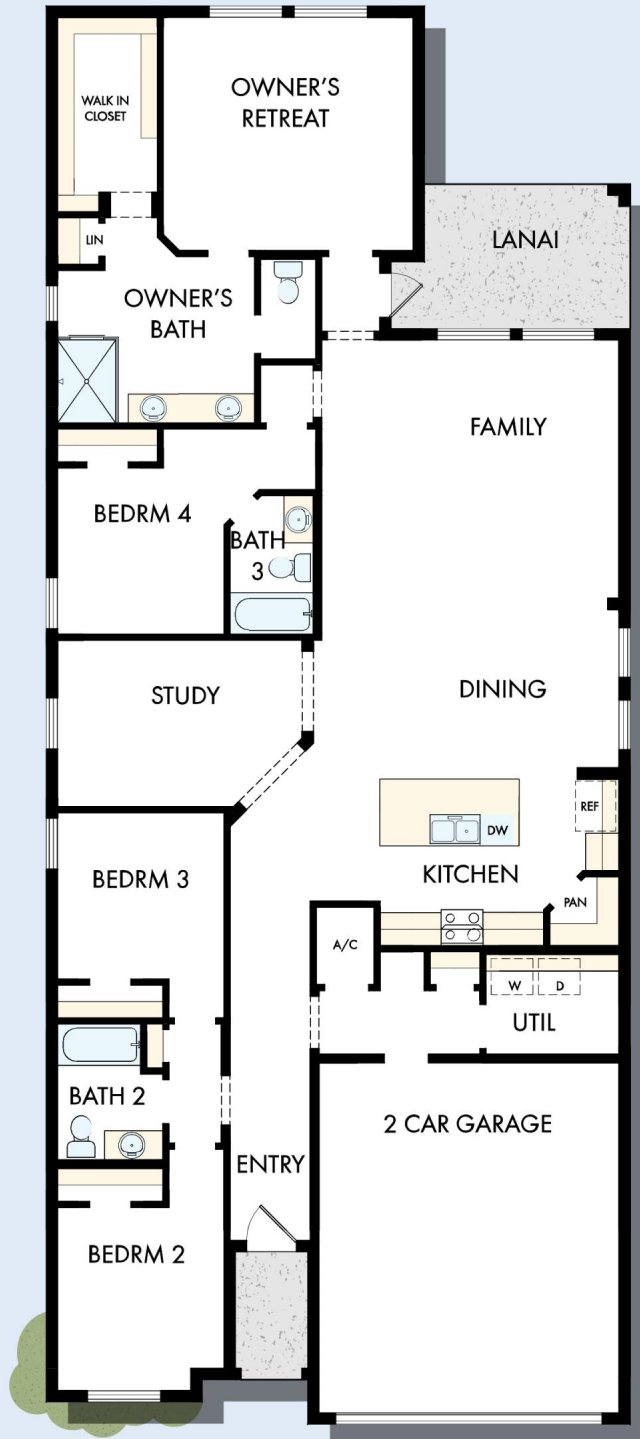
Home is where the heart is.

Years we waited to buy a house. Painful years of raising children in someone else's home. Years I got to ponder what it would be like to have something of my own. I envisioned my children sitting in their home, playing in their rooms, running through their yard...and the days of waiting were over, all of my research paid off. We bought the house of my dreams and were given the best sales associate and builder, down to my warranty specialist. Everything was easy and seamless. I felt like we were working together, like a team. Now, I have a beautiful house that I know was built with integrity. I could not be more grateful.

**David Weekley
Homes**

THE WEIDLER

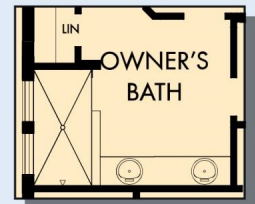
2,255 - 2,261 sq. ft. • 4 Bedrooms • 3 Full Baths • 2 Car Garage



OPTIONAL EXTENDED LANAI WITH SLIDING GLASS DOOR



OPTIONAL SLIDE-IN TUB WITH SEPARATE SHOWER AT OWNER'S BATH



OPTIONAL SUPER SHOWER AT OWNER'S BATH

F042 in 3922 TAM

For additional options, please visit DavidWeekleyHomes.com

9/2/2025



See a David Weekley Homes Sales Consultant for details. Prices, plans, dimensions, features, specifications, materials, and availability of homes or communities are subject to change without notice or obligation. Illustrations are artist's depictions only and may differ from completed improvements. Copyright © 2025 David Weekley Homes - All Rights Reserved. Tampa, FL

DavidWeekleyHomes.com