

# THE COWDEN



Exterior A

1,782 sq. ft.

3 Bedrooms

2 Full Baths

1 Half Bath

1 Car Garage



Exterior B

**Greg and Jane**



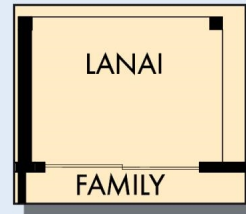
## **Exceptional service and experience!**

We have been fortunate enough to build several new homes and this was by far the best experience that we've encountered. We actually debated whether or not we wanted to go through the home building process again or simply purchase a pre-owned home or a finished new home. So pleased we built! Our Weekley team (sales associate, design consultant and builder) was very professional, courteous, attentive, responsive and pro-active from beginning to end. They've all become our adopted kids! Great overall experience!

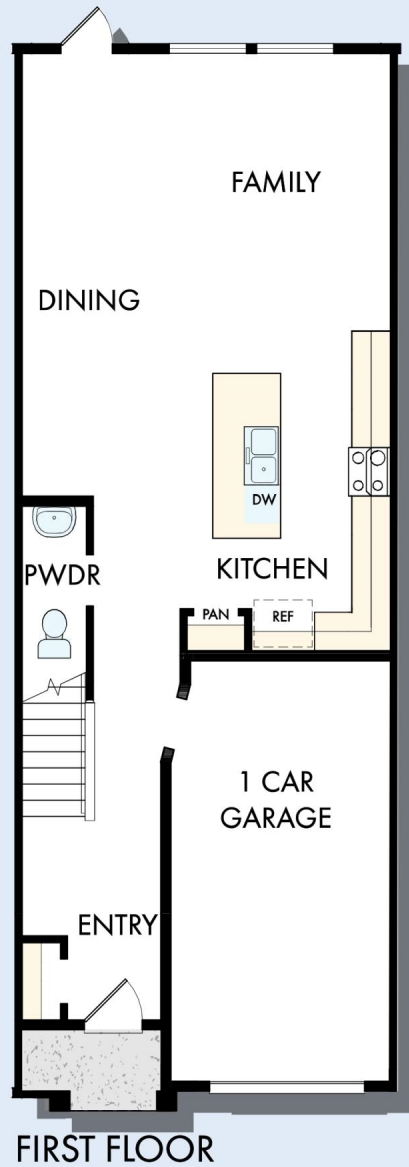
**David Weekley  
Homes**

# THE COWDEN

1,782 sq. ft. • 3 Bedrooms • 2 Full Baths • 1 Half Bath • 1 Car Garage



OPTIONAL LANAI WITH  
SLIDING GLASS DOOR  
AT FAMILY



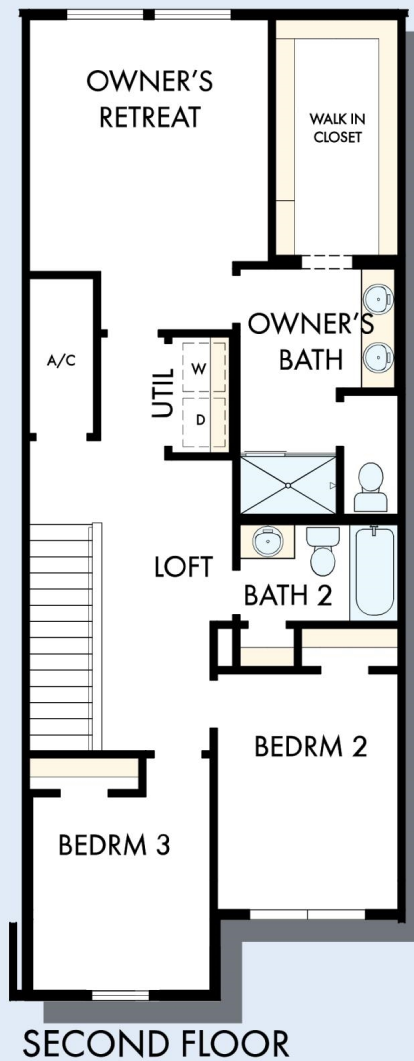
F155 in 3958 TAM

For additional options, please visit [DavidWeekleyHomes.com](http://DavidWeekleyHomes.com)

11/14/2025

**DavidWeekleyHomes.com**

# THE COWDEN



For additional options, please visit [DavidWeekleyHomes.com](http://DavidWeekleyHomes.com)



See a David Weekley Homes Sales Consultant for details. Prices, plans, dimensions, features, specifications, materials, and availability of homes or communities are subject to change without notice or obligation. Illustrations are artist's depictions only and may differ from completed improvements. Copyright © 2025 David Weekley Homes - All Rights Reserved. Tampa, FL

**DavidWeekleyHomes.com**