

THE BRIGHTMAN



Exterior A

2,415 - 2,491 sq. ft.

3 - 4 Bedrooms

2 Full Baths

1 Half Bath

2 Car Garage



Exterior B

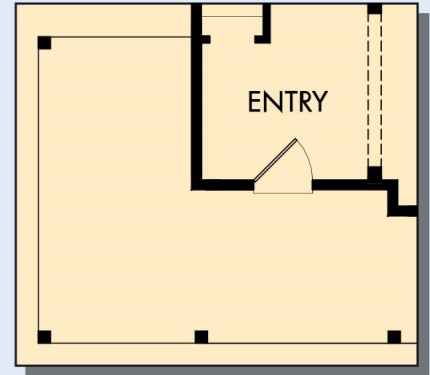
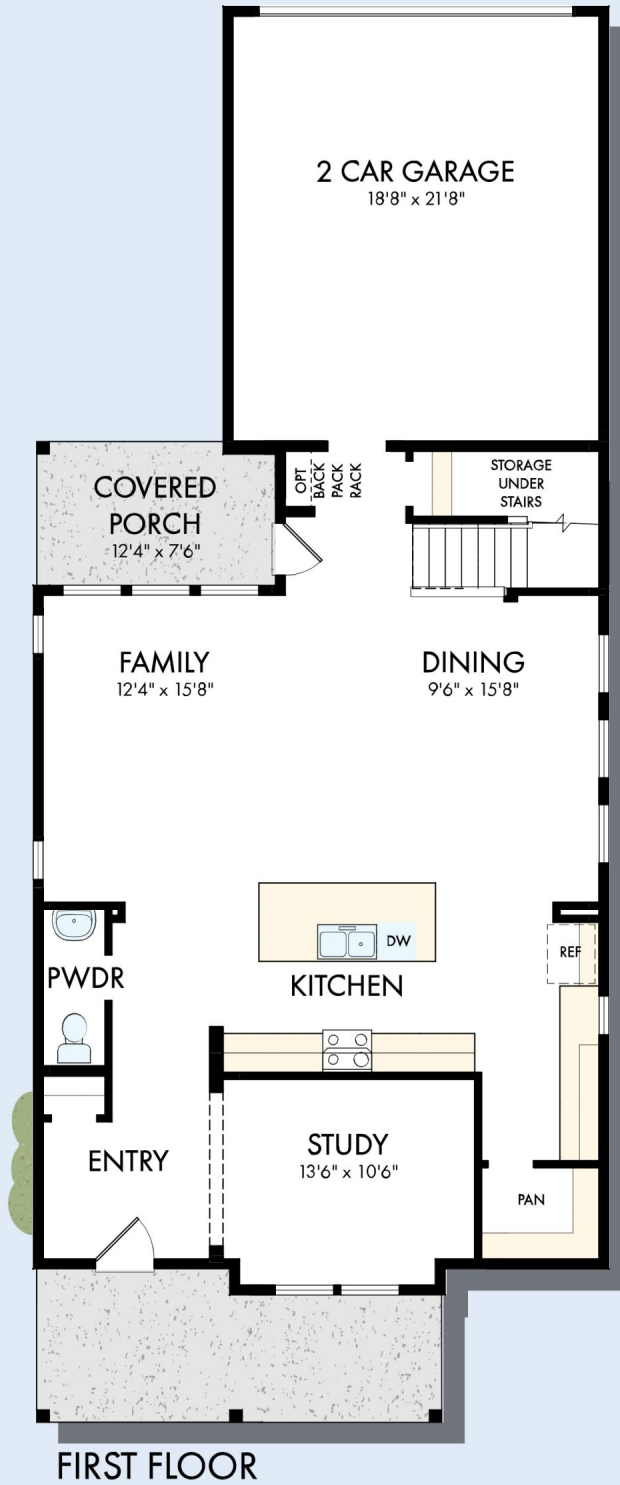


Exterior C

David Weekley
Homes

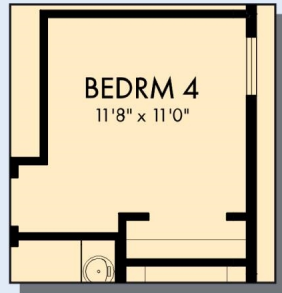
THE BRIGHTMAN

2,415 - 2,491 sq. ft. • 3 - 4 Bedrooms • 2 Full Baths • 1 Half Bath • 2 Car Garage



OPTIONAL WRAPPED PORCH AT ENTRY

THE BRIGHTMAN



OPTIONAL BEDROOM 4
AT RETREAT



OPTIONAL FREE STANDING
TUB WITH SEPARATE SHOWER
AT OWNER'S BATH



OPTIONAL SUPER SHOWER
AT OWNER'S BATH



SECOND FLOOR

For additional options, please visit DavidWeekleyHomes.com

See a David Weekley Homes Sales Consultant for details. Prices, plans, dimensions, features, specifications, materials, and availability of homes or communities are subject to change without notice or obligation. Illustrations are artist's depictions only and may differ from completed improvements. Copyright © 2026 David Weekley Homes - All Rights Reserved. Charlotte, NC

DavidWeekleyHomes.com

