

THE BICKNELL



Exterior A

1,569 sq. ft.

2 - 3 Bedrooms

2 Full Baths

2 - 3 Car Garage



Exterior B

Rich C.



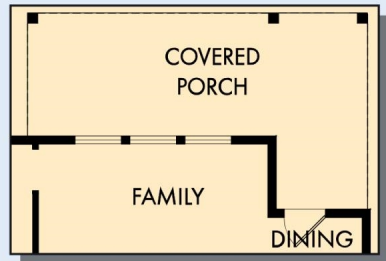
Wonderful Experience!

If there is anything that sets David Weekley apart from other builders it is their customer service. I felt like a member of the family from the first time I walked into the model, to when I received my keys and saw the wonderful housewarming presents that were left for me, up to the present when I see my salesman in the neighborhood. I felt like they really took the time to understand what I was looking for and then came through with my dream home. I would highly recommend David Weekley to anyone looking to buy and/or build a home.

David Weekley
Homes

THE BICKNELL

1,569 sq. ft. • 2 - 3 Bedrooms • 2 Full Baths • 2 - 3 Car Garage



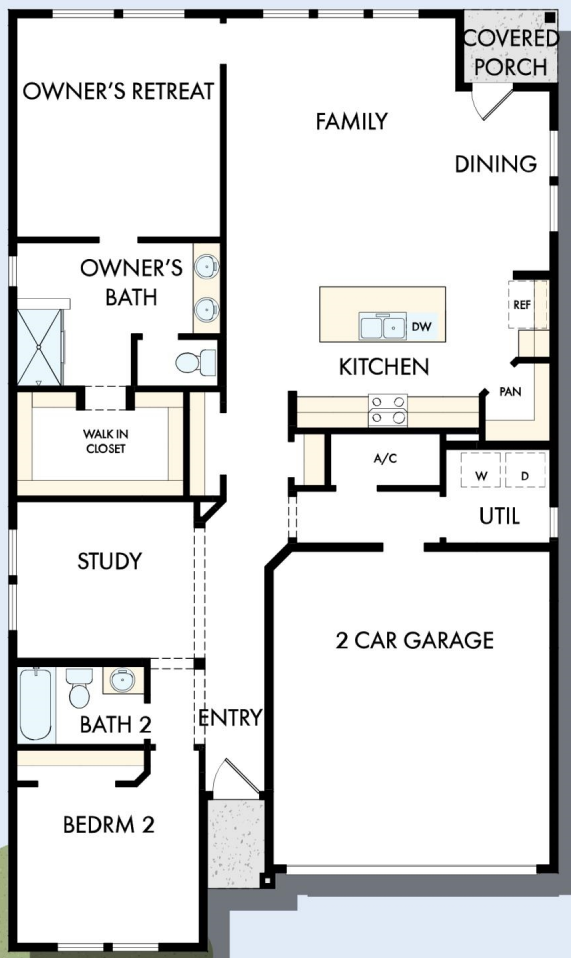
OPTIONAL EXTENDED COVERED PORCH



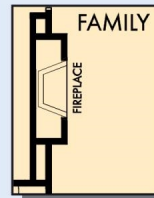
OPTIONAL DROP IN TUB WITH SEPARATE SHOWER AT OWNER'S BATH



OPTIONAL SUPER SHOWER AT OWNER'S BATH



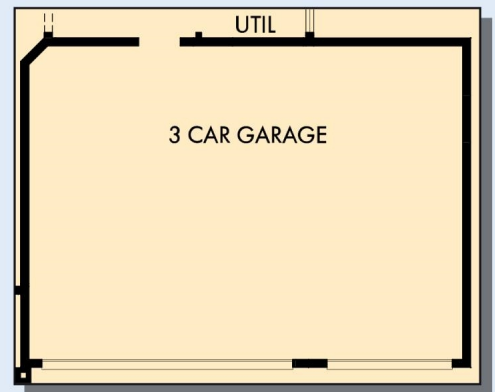
FIRST FLOOR



OPTIONAL WALL FIREPLACE AT FAMILY



OPTIONAL BEDROOM 3 AT STUDY



OPTIONAL 3 CAR GARAGE

A439 in 6841 POR

For additional options, please visit DavidWeekleyHomes.com

4/30/2026

See a David Weekley Homes Sales Consultant for details. Prices, plans, dimensions, features, specifications, materials, and availability of homes or communities are subject to change without notice or obligation. Illustrations are artist's depictions only and may differ from completed improvements. Copyright © 2026 David Weekley Homes - All Rights Reserved. POR, OR

DavidWeekleyHomes.com

