

THE SHEPHERD



Exterior A

2,395 sq. ft.

4 - 5 Bedrooms

3 Full Baths

2 Car Garage



Exterior B

Perez Family



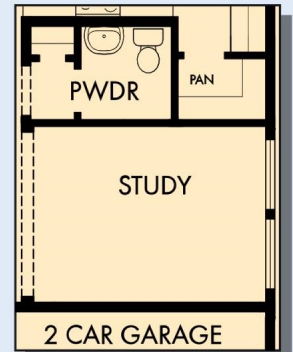
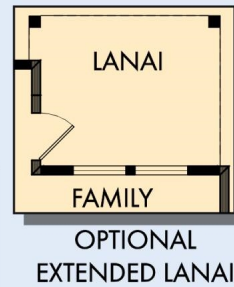
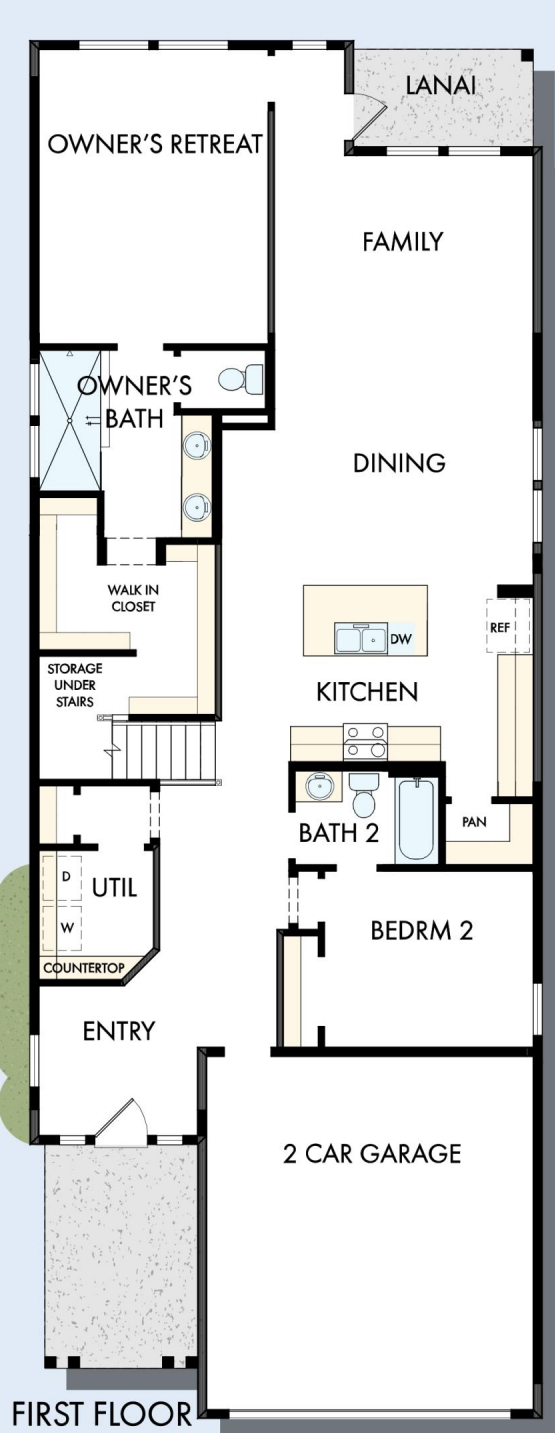
Best Homebuying Experience Ever

We have had several homes built in the past by several homebuilders. Our experience with David Weekley was the best we have ever had. The attention to detail and the customer service were exceptional. Both our sales person and Project Manager kept us well informed and treated us like family. Thanks David Weekley

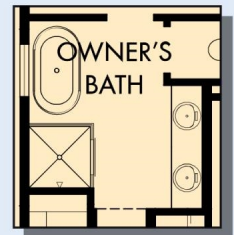
**David Weekley
Homes**

THE SHEPHERD

2,395 sq. ft. • 4 - 5 Bedrooms • 3 Full Baths • 2 Car Garage

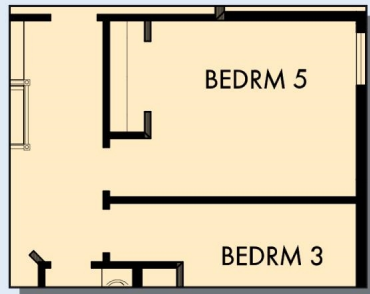


OPTIONAL STUDY
AT BEDROOM 2



OPTIONAL FREE
STANDING TUB
WITH SEPARATE
SHOWER AT
OWNER'S BATH

THE SHEPHERD



OPTIONAL BEDROOM 5
AT RETREAT



SECOND FLOOR

For additional options, please visit DavidWeekleyHomes.com



See a David Weekley Homes Sales Consultant for details.
Prices, plans, dimensions, features, specifications, materials,
and availability of homes or communities are subject to
change without notice or obligation. Illustrations are artist's
depictions only and may differ from completed improvements.
Copyright © 2026 David Weekley Homes - All Rights Reserved.
Jacksonville, FL

DavidWeekleyHomes.com