

THE KEATON



Exterior B



Exterior C

2,881 - 2,923 sq. ft.

4 - 5 Bedrooms

3 - 4 Full Baths

2 - 3 Car Garage

Gigi and Papa



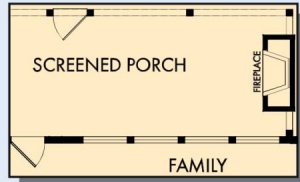
THE BESTest - Better than all the rest!

What an awesome and personal family-oriented company! From touring model homes to selecting "THE ONE" just for us, the experience was delightful and amazing! The entire David Weekley team has been exceptionally wonderful and always available to address any issues we encountered. We have been amazed and impressed by the "Service after the Sale" approach by the David Weekley staff. We would recommend David Weekley homes to anyone. We feel like we are an important member of the Weekley family!

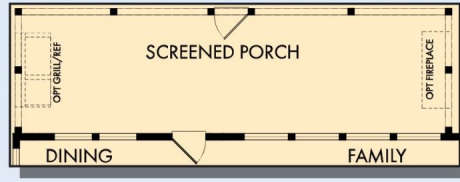
**David Weekley
Homes**

THE KEATON

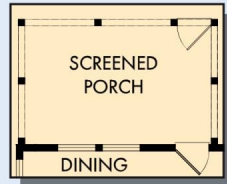
2,881 - 2,923 sq. ft. • 4 - 5 Bedrooms • 3 - 4 Full Baths • 2 - 3 Car Garage



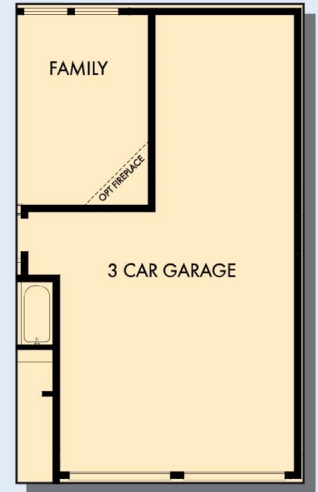
OPTIONAL OUTDOOR FIREPLACE AT EXTENDED SCREENED PORCH



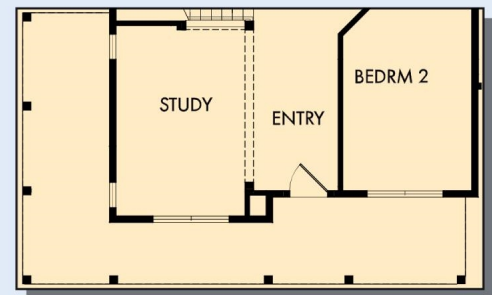
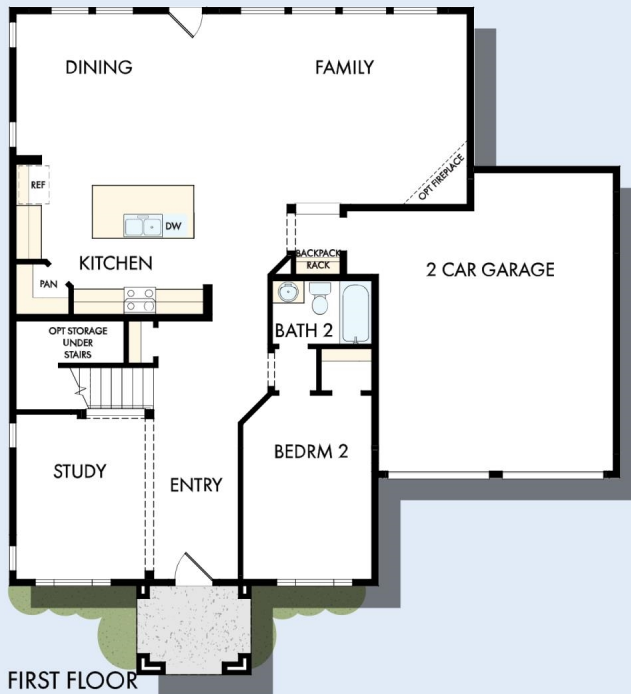
OPTIONAL EXTENDED SCREENED PORCH AT FAMILY AND DINING



OPTIONAL SCREENED PORCH AT DINING



OPTIONAL 3 CAR GARAGE



OPTIONAL WRAP AROUND PORCH (ELEVATION 8 ONLY)

THE KEATON



OPTIONAL FREE
STANDING TUB WITH
SEPARATE SHOWER
AT OWNER'S BATH



OPTIONAL SUPER
SHOWER AT
OWNER'S BATH



OPTIONAL BEDROOM 5 WITH
BATH 4 AT RETREAT



SECOND FLOOR

For additional options, please visit DavidWeekleyHomes.com

See a David Weekley Homes Sales Consultant for details. Prices, plans, dimensions, features, specifications, materials, and availability of homes or communities are subject to change without notice or obligation. Illustrations are artist's depictions only and may differ from completed improvements. Copyright © 2025 David Weekley Homes - All Rights Reserved. Charleston, SC



DavidWeekleyHomes.com

