

THE MUNICH



Exterior A

2,569 sq. ft.

4 Bedrooms

3 Full Baths

1 Half Bath

2 Car Garage



Exterior B

Shane



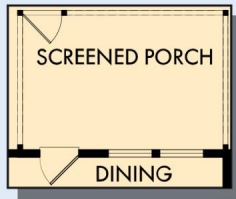
We're living our fairytale thanks to David Weekley

We can't say enough about the level of quality and care we received while building our home. Our builder was with us every step of the way to make sure our every need and desire was being met! The team truly went above and beyond at every turn to give us the home of our dreams! We will definitely recommend David Weekley to anyone looking to build a new home!

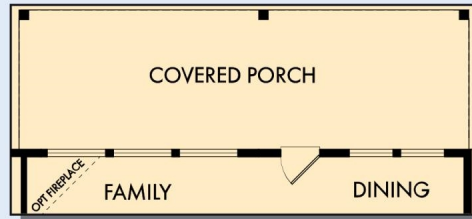
**David Weekley
Homes**

THE MUNICH

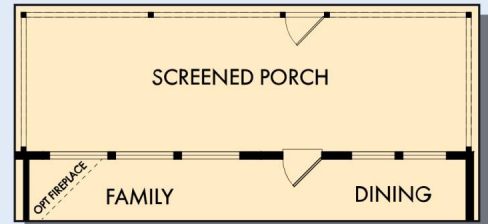
2,569 sq. ft. • 4 Bedrooms • 3 Full Baths • 1 Half Bath • 2 Car Garage



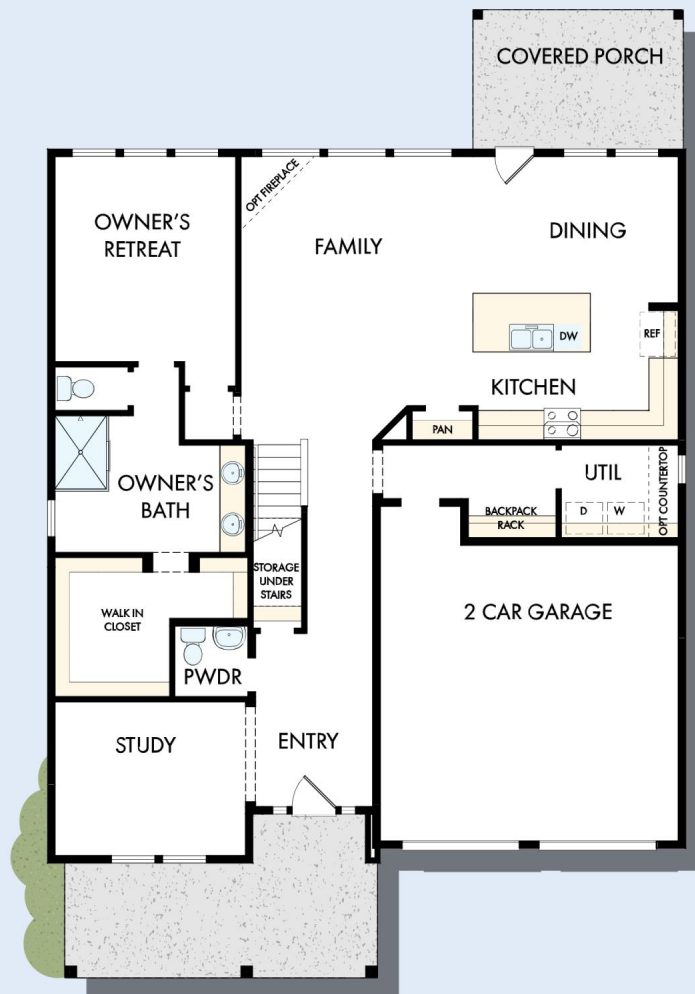
OPTIONAL
SCREENED PORCH



OPTIONAL EXTENDED COVERED PORCH



OPTIONAL EXTENDED SCREENED PORCH



FIRST FLOOR



OPTIONAL FREE STANDING
TUB WITH SEPARATE SHOWER
AT OWNER'S BATH



OPTIONAL SUPER SHOWER
AT OWNER'S BATH



OPTIONAL SLIDE-IN TUB
WITH SEPARATE SHOWER
AT OWNER'S BATH

THE MUNICH



SECOND FLOOR

For additional options, please visit DavidWeekleyHomes.com



See a David Weekley Homes Sales Consultant for details. Prices, plans, dimensions, features, specifications, materials, and availability of homes or communities are subject to change without notice or obligation. Illustrations are artist's depictions only and may differ from completed improvements. Copyright © 2025 David Weekley Homes - All Rights Reserved. Charleston, SC

DavidWeekleyHomes.com