

THE SAW MILL



Exterior G

2,846 - 2,852 sq. ft.

4 Bedrooms

3 Full Baths

2 Car Garage



Exterior H

Greg and Jane



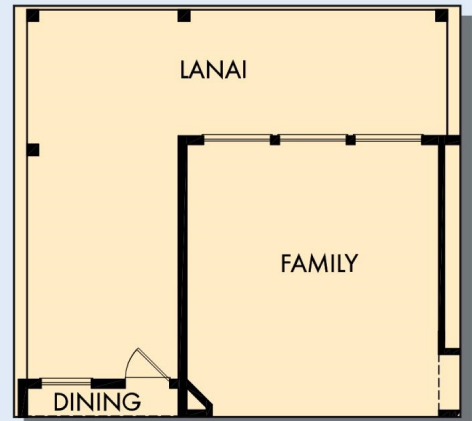
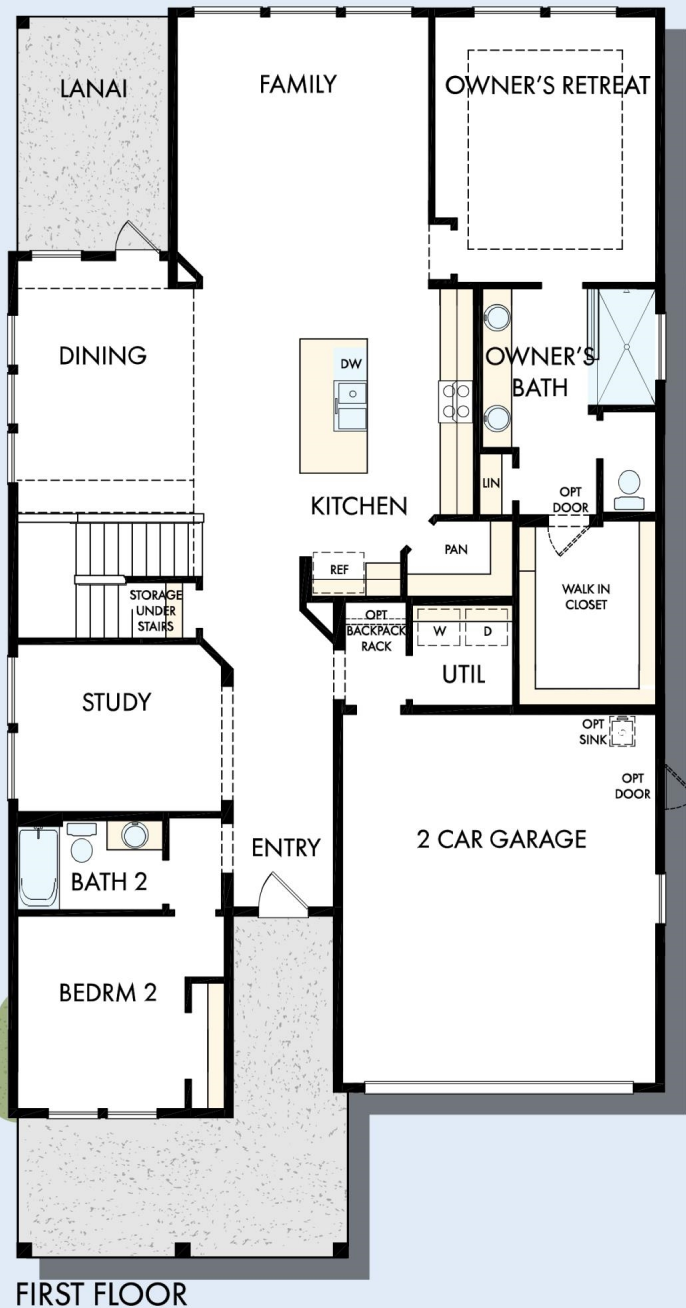
Exceptional service and experience!

We have been fortunate enough to build several new homes and this was by far the best experience that we've encountered. We actually debated whether or not we wanted to go through the home building process again or simply purchase a pre-owned home or a finished new home. So pleased we built! Our Weekley team (sales associate, design consultant and builder) was very professional, courteous, attentive, responsive and pro-active from beginning to end. They've all become our adopted kids! Great overall experience!

**David Weekley
Homes**

THE SAW MILL

2,846 - 2,852 sq. ft. • 4 Bedrooms • 3 Full Baths • 2 Car Garage



OPTIONAL EXTENDED LANAI AT DINING AND FAMILY



OPTIONAL SLIP IN TUB WITH SEPARATE SHOWER AT OWNER'S BATH

B523 in 4494 JAC

For additional options, please visit DavidWeekleyHomes.com

10/28/2025

DavidWeekleyHomes.com

THE SAW MILL



For additional options, please visit DavidWeekleyHomes.com



See a David Weekley Homes Sales Consultant for details. Prices, plans, dimensions, features, specifications, materials, and availability of homes or communities are subject to change without notice or obligation. Illustrations are artist's depictions only and may differ from completed improvements. Copyright © 2025 David Weekley Homes - All Rights Reserved. Jacksonville, FL

DavidWeekleyHomes.com