

# THE FIRMONT



Exterior A

2,083 - 3,064 sq. ft.

3 - 4 Bedrooms

2 - 3 Full Baths

1 Half Bath

2 Car Garage



Exterior B

**Gigi and Papa**



## **THE BESTest - Better than all the rest!**

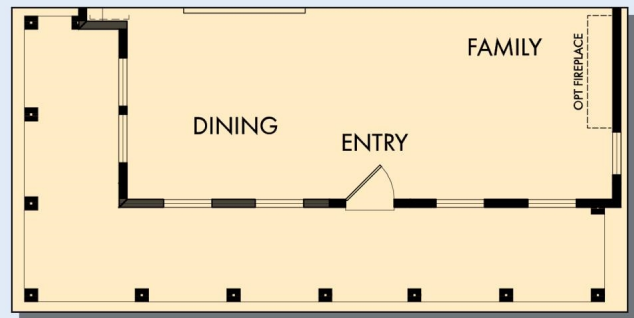
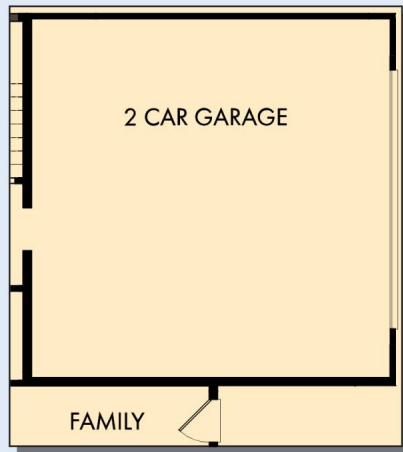
What an awesome and personal family-oriented company! From touring model homes to selecting "THE ONE" just for us, the experience was delightful and amazing! The entire David Weekley team has been exceptionally wonderful and always available to address any issues we encountered. We have been amazed and impressed by the "Service after the Sale" approach by the David Weekley staff. We would recommend David Weekley homes to anyone. We feel like we are an important member of the Weekley family!

**David Weekley  
Homes**

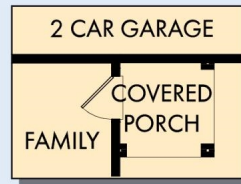


# THE FIRMONT

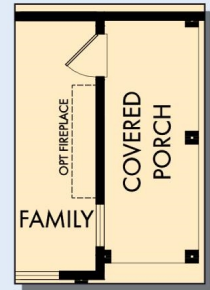
2,083 - 3,064 sq. ft. • 3 - 4 Bedrooms • 2 - 3 Full Baths • 1 Half Bath • 2 Car Garage



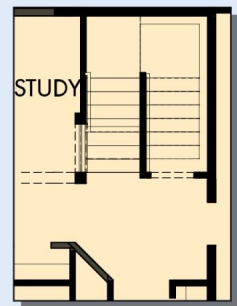
OPTIONAL WRAP AROUND FRONT PORCH



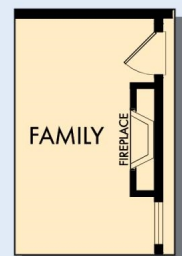
OPTIONAL COVERED PORCH AT FAMILY



OPTIONAL EXTENDED COVERED PORCH AT FAMILY

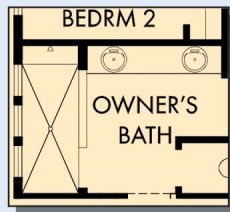


FIRST FLOOR WITH OPTIONAL FINISHED STAIRS



OPTIONAL WALL FIREPLACE AT FAMILY

# THE FIRMONT



OPTIONAL SUPER  
SHOWER AT  
OWNER'S BATH



OPTIONAL DROP IN TUB  
WITH SEPARATE SHOWER  
AT OWNER'S BATH

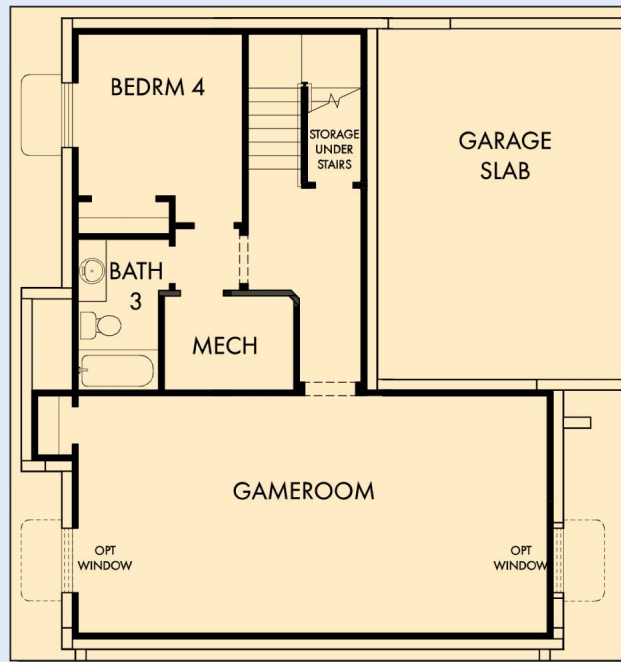


SECOND FLOOR

For additional options, please visit [DavidWeekleyHomes.com](http://DavidWeekleyHomes.com)

**DavidWeekleyHomes.com**

# THE FIRMONT



OPTIONAL GAMEROOM WITH BEDROOM 4 AND BATH 3  
AT BASEMENT



For additional options, please visit [DavidWeekleyHomes.com](http://DavidWeekleyHomes.com)



See a David Weekley Homes Sales Consultant for details. Prices, plans, dimensions, features, specifications, materials, and availability of homes or communities are subject to change without notice or obligation. Illustrations are artist's depictions only and may differ from completed improvements. Copyright © 2025 David Weekley Homes - All Rights Reserved. Salt Lake City, UT

## DavidWeekleyHomes.com