

THE ANSON



Exterior A

2,354 - 2,872 sq. ft.

4 Bedrooms

3 Full Baths

2 - 3 Car Garage



Exterior B

Crystal W.



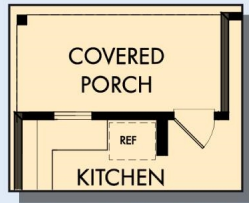
Welcome Home

My DWHome's experience has been truly 5-stars! From a floorplan concept, reserving a lot filled with dirt, the homebuilding project, to "Welcome Home", the entire process has been amazing. The team provided regular feedback and were always available to address questions and concerns. I was sold on the quality features. The entire team's availability and service has been exceptional before and after closing. Looking forward to enjoying our new home and neighbors for many years to come!

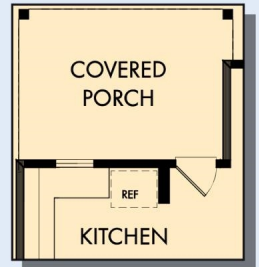
**David Weekley
Homes**

THE ANSON

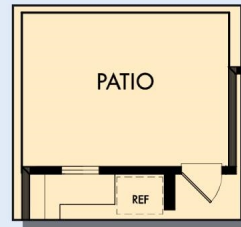
2,354 - 2,872 sq. ft. • 4 Bedrooms • 3 Full Baths • 2 - 3 Car Garage



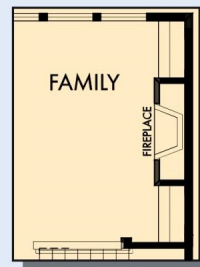
OPTIONAL COVERED PORCH AT KITCHEN



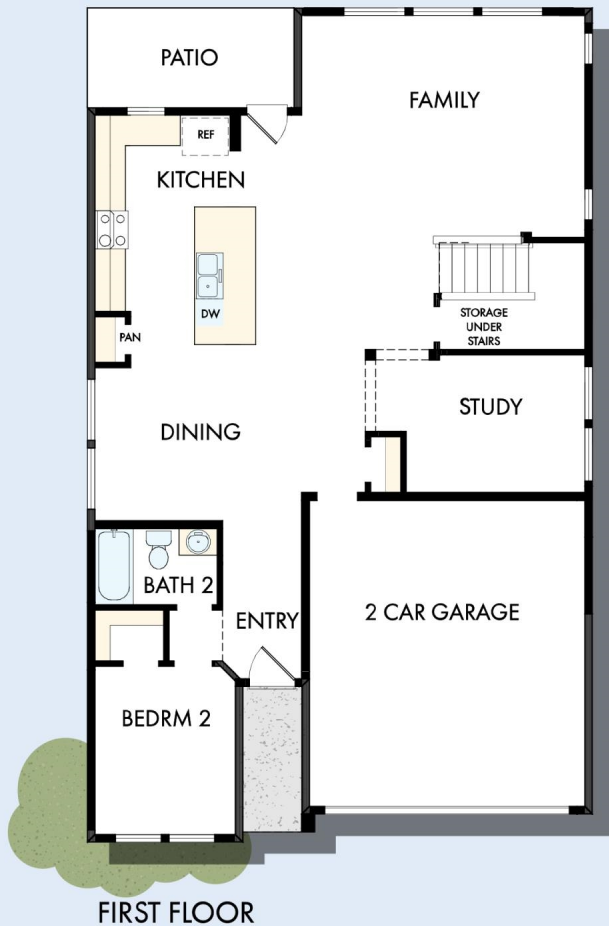
OPTIONAL EXTENDED COVERED PORCH AT KITCHEN



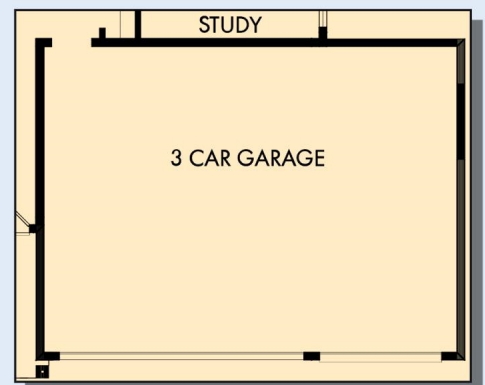
OPTIONAL EXTENDED PATIO AT KITCHEN



OPTIONAL WALL FIREPLACE WITH CABINETS AT FAMILY

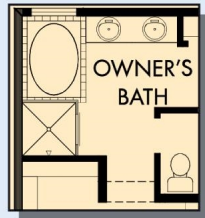


FIRST FLOOR



OPTIONAL 3 CAR GARAGE

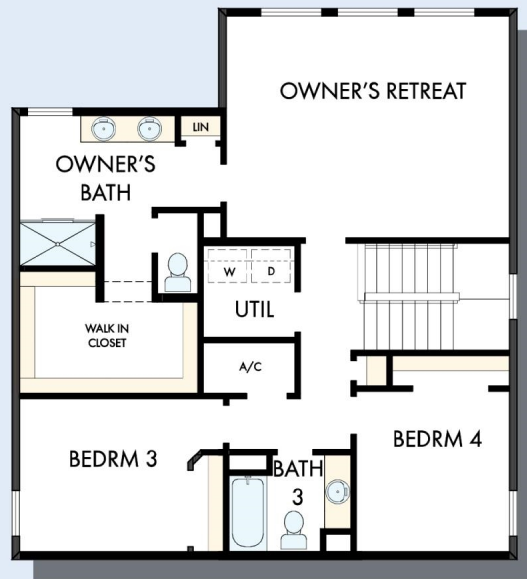
THE ANSON



OPTIONAL DROP-IN TUB WITH SEPARATE SHOWER AT OWNER'S BATH



OPTIONAL SUPER SHOWER AT OWNER'S BATH



SECOND FLOOR

For additional options, please visit DavidWeekleyHomes.com

See a David Weekley Homes Sales Consultant for details. Prices, plans, dimensions, features, specifications, materials, and availability of homes or communities are subject to change without notice or obligation. Illustrations are artist's depictions only and may differ from completed improvements. Copyright © 2026 David Weekley Homes - All Rights Reserved. POR, OR

DavidWeekleyHomes.com

