

THE SHIPMAN



Exterior A



Exterior B

2,208 - 3,642 sq. ft.

3 - 4 Bedrooms

2 - 3 Full Baths

0 - 1 Half Baths

2 Car Garage

Greg and Jane



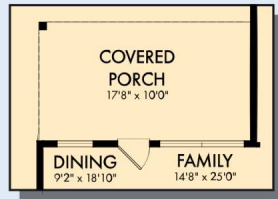
Exceptional service and experience!

We have been fortunate enough to build several new homes and this was by far the best experience that we've encountered. We actually debated whether or not we wanted to go through the home building process again or simply purchase a pre-owned home or a finished new home. So pleased we built! Our Weekley team (sales associate, design consultant and builder) was very professional, courteous, attentive, responsive and pro-active from beginning to end. They've all become our adopted kids! Great overall experience!

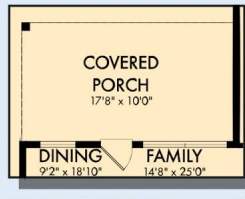
**David Weekley
Homes**

THE SHIPMAN

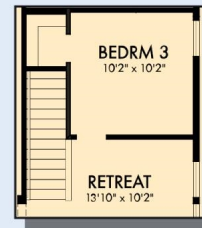
2,208 - 3,642 sq. ft. • 3 - 4 Bedrooms • 2 - 3 Full Baths • 0 - 1 Half Baths • 2 Car Garage



OPTIONAL COVERED PORCH WITH UNFINISHED BASEMENT



OPTIONAL EXTENDED COVERED PORCH AT DINING



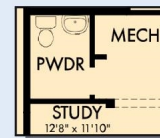
FIRST FLOOR WITH OPTIONAL BASEMENT



OPTIONAL SUPER SHOWER AT OWNER'S BATH



FIRST FLOOR

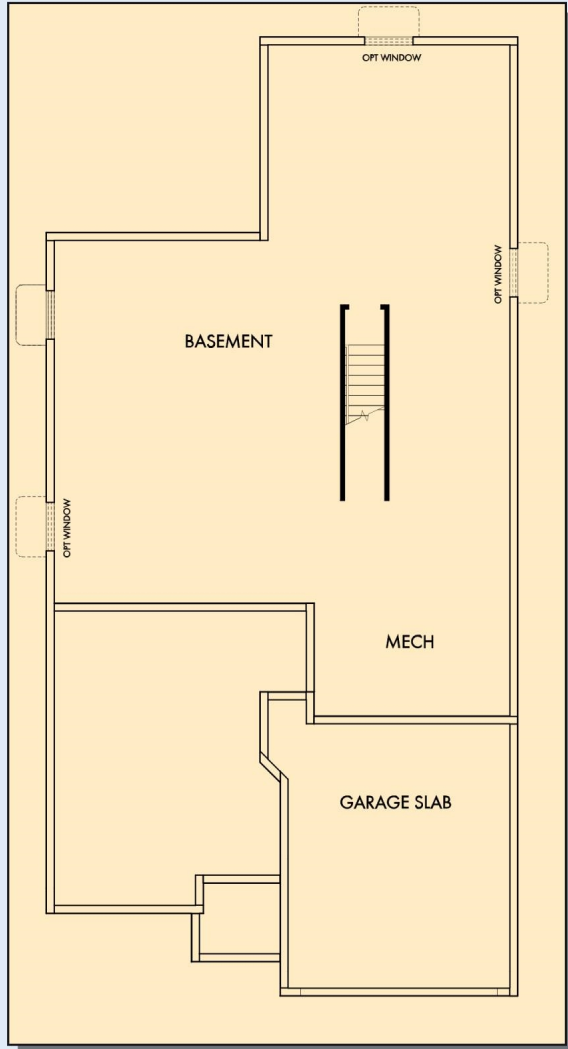


OPTIONAL POWDER BATH AT HALLWAY

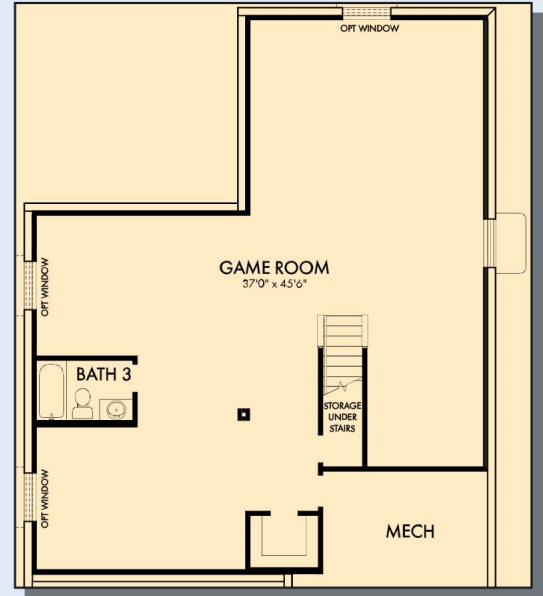


OPTIONAL EXTENDED BEDROOM 2 AND 3 AT RETREAT

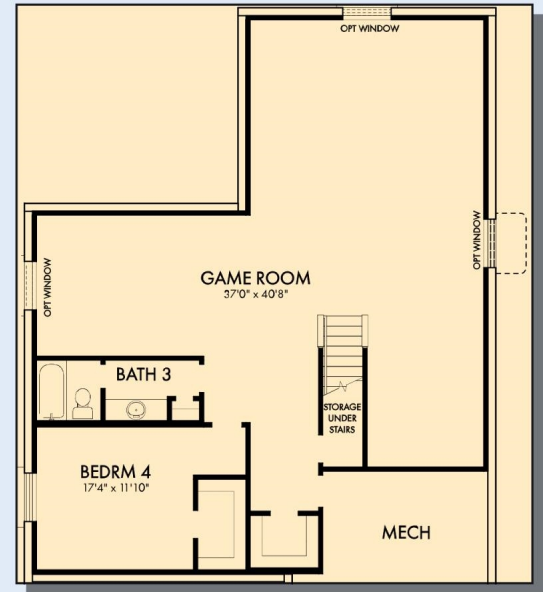
THE SHIPMAN



OPTIONAL BASEMENT



OPTIONAL GAME ROOM WITH BATH 3 AT BASEMENT



OPTIONAL GAME ROOM WITH BEDROOM 4 AND BATH 3 AT BASEMENT

For additional options, please visit DavidWeekleyHomes.com

See a David Weekley Homes Sales Consultant for details. Prices, plans, dimensions, features, specifications, materials, and availability of homes or communities are subject to change without notice or obligation. Illustrations are artist's depictions only and may differ from completed improvements. Copyright © 2026 David Weekley Homes - All Rights Reserved. Indianapolis, IN

DavidWeekleyHomes.com

