

# THE GREENLEE

sq. ft.

Bedrooms

Full Baths

Half Baths

Car Garage

**David Weekley  
Homes**

**Shane**



## **We're living our fairytale thanks to David Weekley**

We can't say enough about the level of quality and care we received while building our home. Our builder was with us every step of the way to make sure our every need and desire was being met! The team truly went above and beyond at every turn to give us the home of our dreams! We will definitely recommend David Weekley to anyone looking to build a new home!

**Meg S.**



## **Truly treated us like family!!!**

We enjoyed every part of the home building process. It was amazing! Our builder was always keeping us informed and really went above and beyond to ensure that we love our home. Our warranty rep is outstanding and continues to take care of our every need. I couldn't have asked for a better experience. Our builder and warranty rep continue to be there for us as a family. While our interactions with the DW Family have been highly professional, we are also lucky enough to be able to call them some of our greatest friends! Wouldn't change a thing!

# THE GREENLEE

sq. ft. • Bedrooms • Full Baths • Half Baths • Car Garage



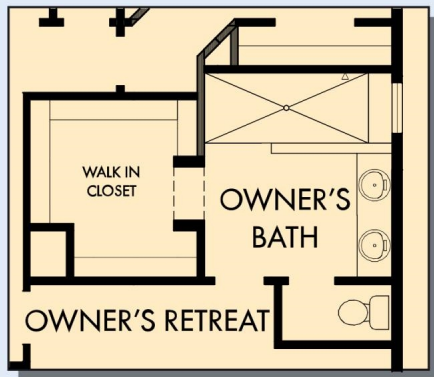
W027 in NAS

For additional options, please visit [DavidWeekleyHomes.com](http://DavidWeekleyHomes.com)

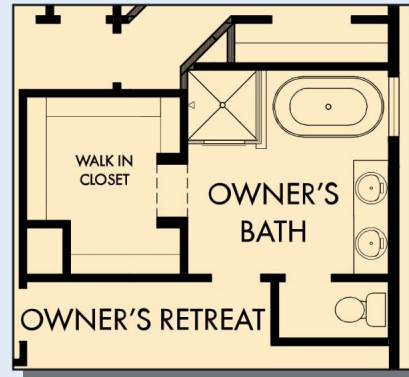
11/4/2025

**DavidWeekleyHomes.com**

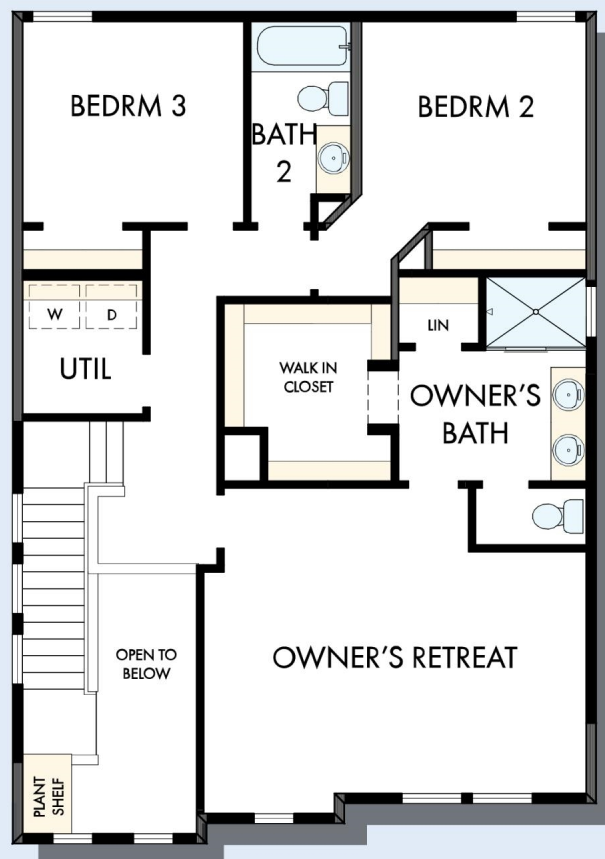
# THE GREENLEE



OPTIONAL SUPER SHOWER  
AT OWNER'S BATH



OPTIONAL FREE STANDING  
TUB WITH SEPARATE SHOWER  
AT OWNER'S BATH



SECOND FLOOR

For additional options, please visit [DavidWeekleyHomes.com](http://DavidWeekleyHomes.com)

See a David Weekley Homes Sales Consultant for details. Prices, plans, dimensions, features, specifications, materials, and availability of homes or communities are subject to change without notice or obligation. Illustrations are artist's depictions only and may differ from completed improvements. Copyright © 2025 David Weekley Homes - All Rights Reserved. Nashville, TN



**DavidWeekleyHomes.com**