

THE TOWNSMAN



Exterior A



Exterior B

2,153 - 3,605 sq. ft.

2 - 5 Bedrooms

2 - 3 Full Baths

2 - 3 Car Garage

Rich C.



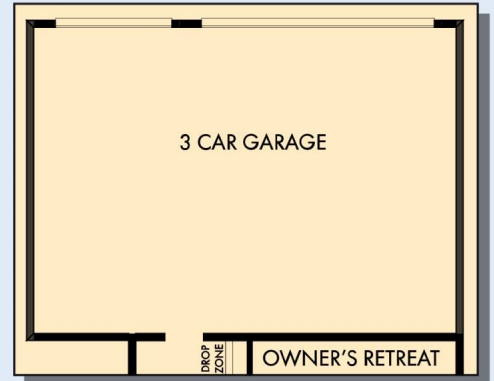
Wonderful Experience!

If there is anything that sets David Weekley apart from other builders it is their customer service. I felt like a member of the family from the first time I walked into the model, to when I received my keys and saw the wonderful housewarming presents that were left for me, up to the present when I see my salesman in the neighborhood. I felt like they really took the time to understand what I was looking for and then came through with my dream home. I would highly recommend David Weekley to anyone looking to buy and/or build a home.

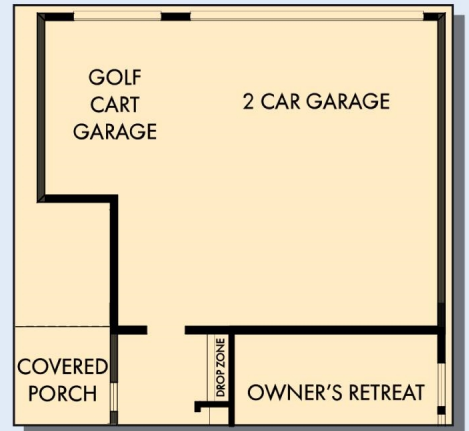
David Weekley
Homes

THE TOWNSMAN

2,153 - 3,605 sq. ft. • 2 - 5 Bedrooms • 2 - 3 Full Baths • 2 - 3 Car Garage



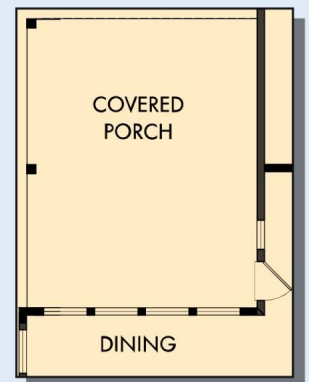
OPTIONAL 3 CAR GARAGE



OPTIONAL GOLF CART GARAGE



OPTIONAL SUPER SHOWER AT OWNER'S BATH



OPTIONAL EXTENDED COVERED PORCH

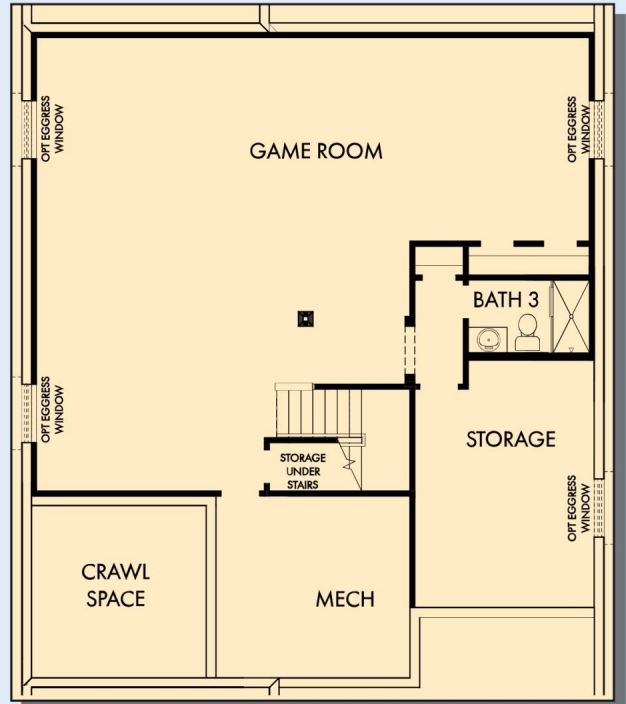
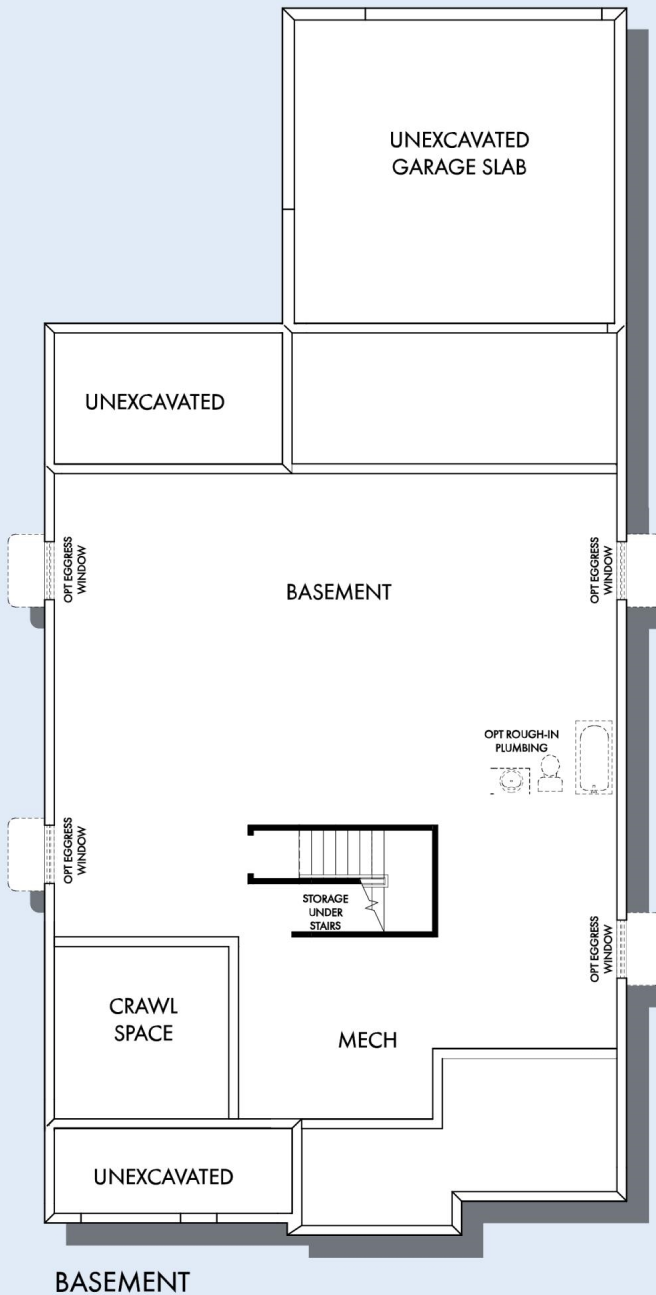
THE TOWNSMAN

For additional options, please visit DavidWeekleyHomes.com

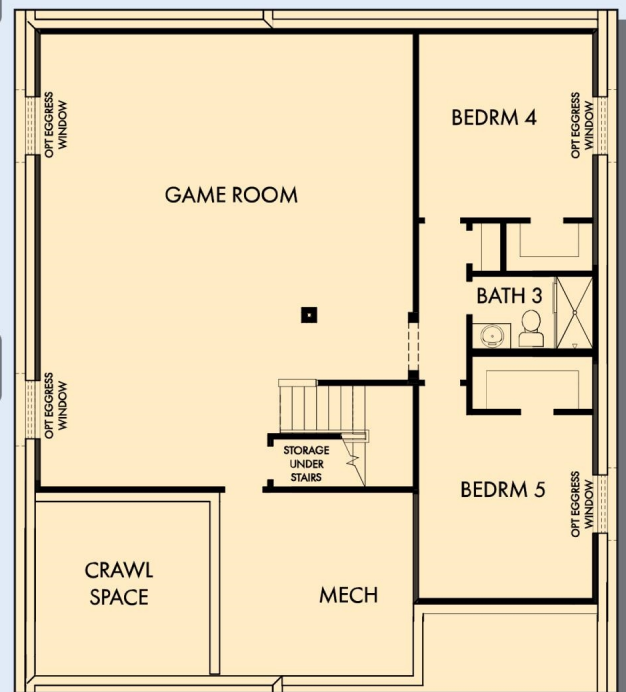
DavidWeekleyHomes.com



THE TOWNSMAN



OPTIONAL GAME ROOM WITH BATH 3 AT BASEMENT



OPTIONAL GAME ROOM WITH BEDROOM 4,5 AND BATH 3 AT BASEMENT

For additional options, please visit DavidWeekleyHomes.com

See a David Weekley Homes Sales Consultant for details. Prices, plans, dimensions, features, specifications, materials, and availability of homes or communities are subject to change without notice or obligation. Illustrations are artist's depictions only and may differ from completed improvements. Copyright © 2026 David Weekley Homes - All Rights Reserved. Indianapolis, IN

DavidWeekleyHomes.com

