

THE HEELER



Exterior A

1,684 - 1,789 sq. ft.

3 - 4 Bedrooms

2 - 3 Full Baths

1 - 2 Half Baths

2 Car Garage



Exterior B

Gigi and Papa



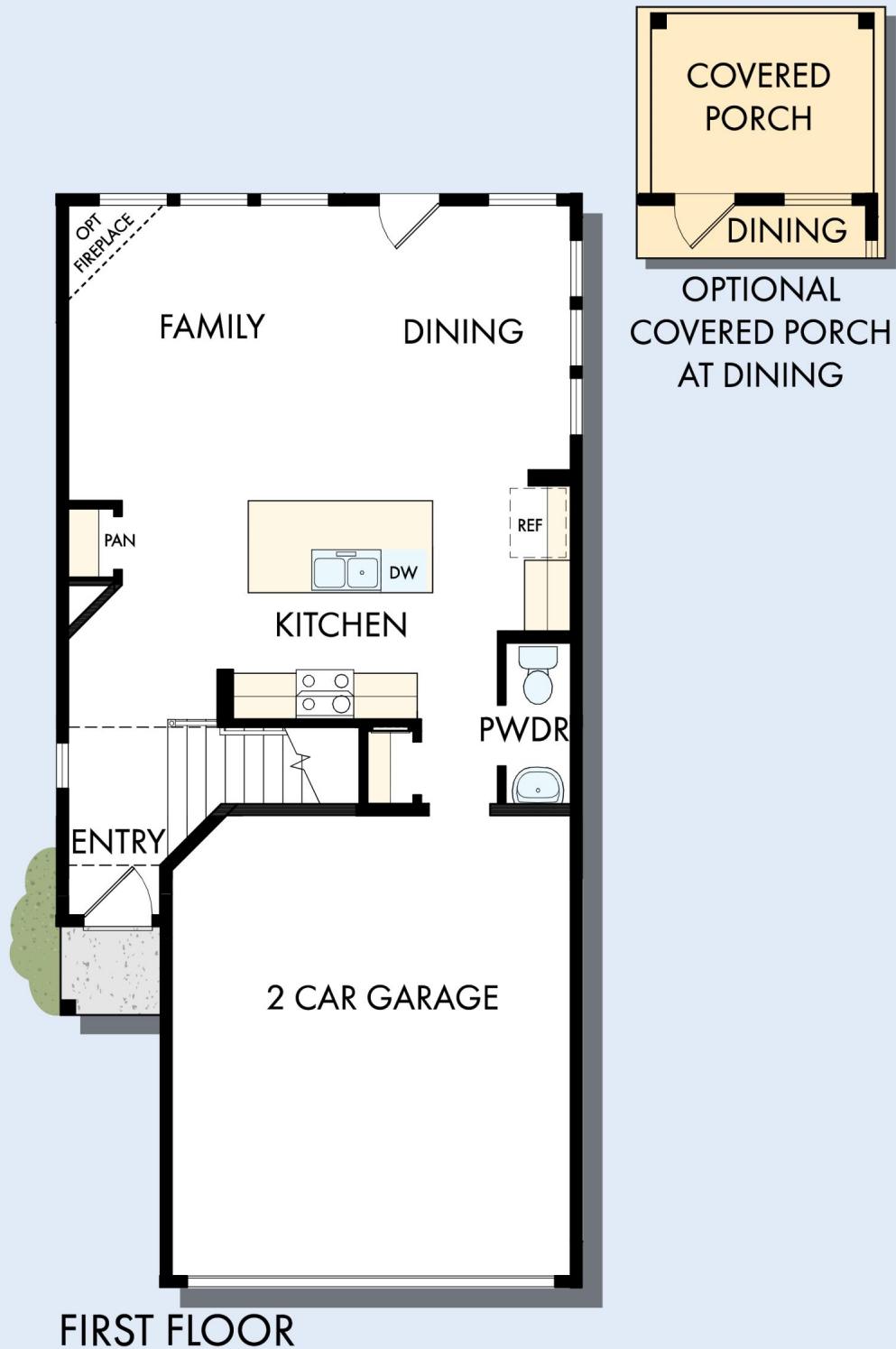
THE BESTest - Better than all the rest!

What an awesome and personal family-oriented company! From touring model homes to selecting "THE ONE" just for us, the experience was delightful and amazing! The entire David Weekley team has been exceptionally wonderful and always available to address any issues we encountered. We have been amazed and impressed by the "Service after the Sale" approach by the David Weekley staff. We would recommend David Weekley homes to anyone. We feel like we are an important member of the Weekley family!

**David Weekley
Homes**

THE HEELER

1,684 - 1,789 sq. ft. • 3 - 4 Bedrooms • 2 - 3 Full Baths • 1 - 2 Half Baths • 2 Car Garage



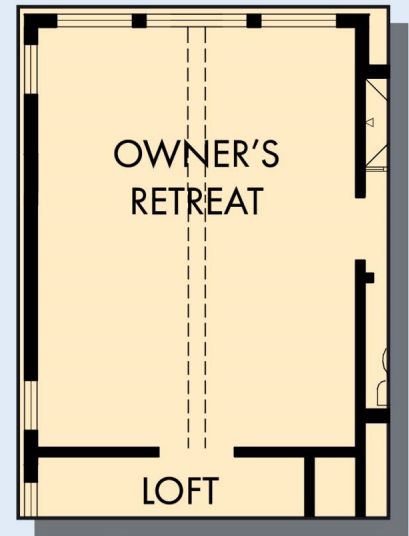
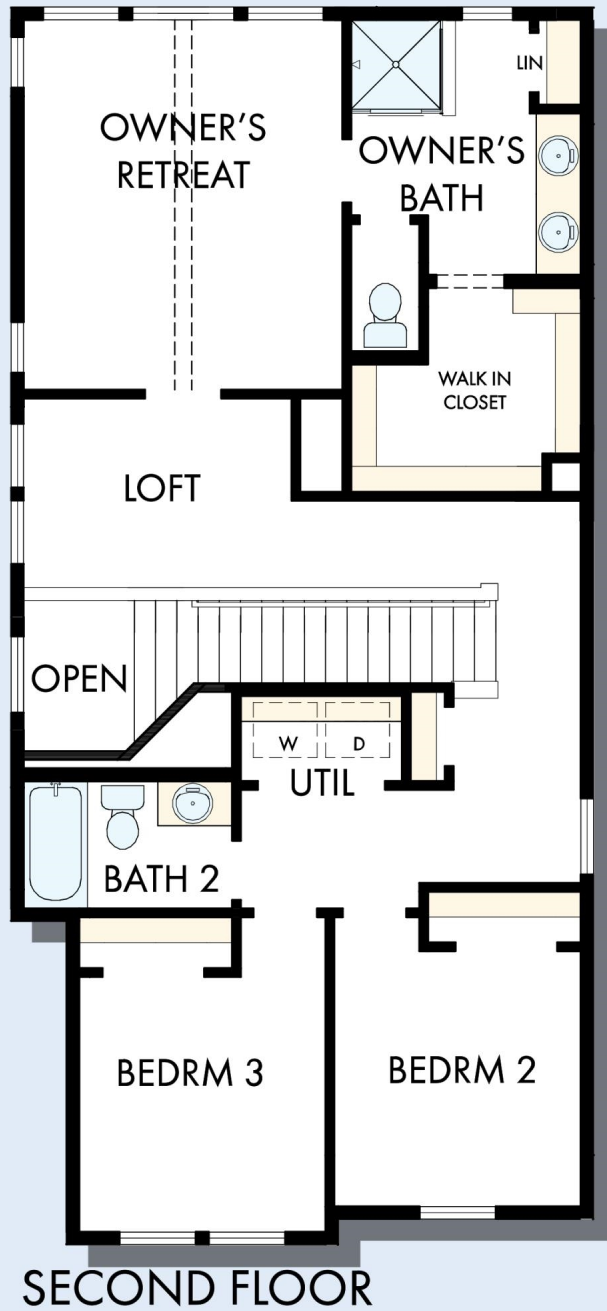
B672 in 2221 AUS

For additional options, please visit DavidWeekleyHomes.com

1/9/2026

DavidWeekleyHomes.com

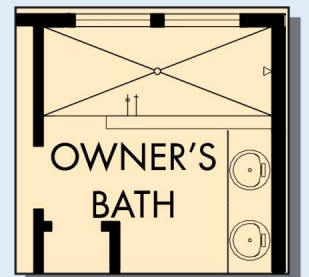
THE HEELER



OPTIONAL EXTENDED
OWNER'S RETREAT



OPTIONAL DROP-IN
TUB WITH SEPARATE
SHOWER AT
OWNER'S BATH



OPTIONAL SUPER
SHOWER AT
OWNER'S BATH

For additional options, please visit DavidWeekleyHomes.com

DavidWeekleyHomes.com

See a David Weekley Homes Sales Consultant for details.
Prices, plans, dimensions, features, specifications, materials,
and availability of homes or communities are subject to
change without notice or obligation. Illustrations are artist's
depictions only and may differ from completed improvements.
Copyright © 2026 David Weekley Homes - All Rights Reserved.
Austin, TX

