

# THE BROMLEY



Exterior A



Exterior B

2,299 - 4,128 sq. ft.

3 - 4 Bedrooms

2 - 3 Full Baths

0 - 1 Half Baths

3 - 4 Car Garage

**Meg S.**



### **Truly treated us like family!!!**

We enjoyed every part of the home building process. It was amazing! Our builder was always keeping us informed and really went above and beyond to ensure that we love our home. Our warranty rep is outstanding and continues to take care of our every need. I couldn't have asked for a better experience. Our builder and warranty rep continue to be there for us as a family. While our interactions with the DW Family have been highly professional, we are also lucky enough to be able to call them some of our greatest friends! Wouldn't change a thing!

**David Weekley  
Homes**

# THE BROMLEY

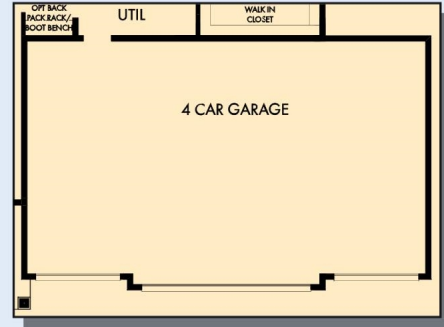
2,299 - 4,128 sq. ft. • 3 - 4 Bedrooms • 2 - 3 Full Baths • 0 - 1 Half Baths • 3 - 4 Car Garage



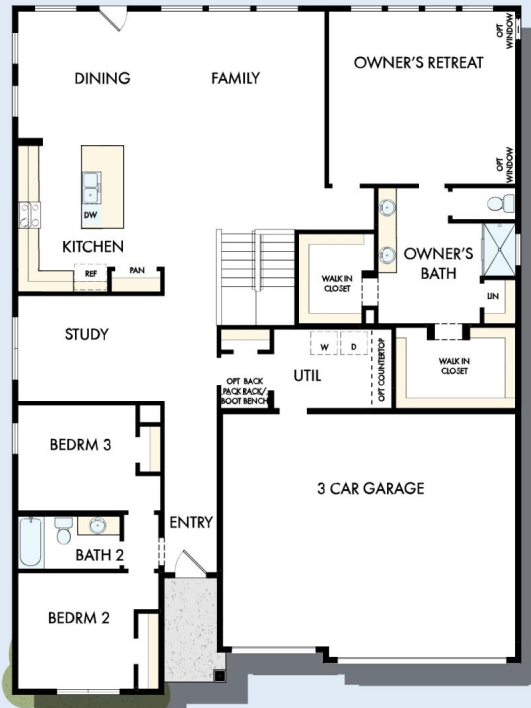
OPTIONAL FREE  
STANDING TUB WITH  
SEPARATE SHOWER  
AT OWNER'S BATH



OPTIONAL SUPER  
SHOWER AT  
OWNER'S BATH



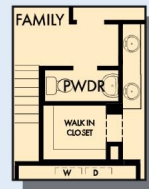
OPTIONAL 4 CAR GARAGE



FIRST FLOOR



OPTIONAL WALL  
FIREPLACE AT FAMILY

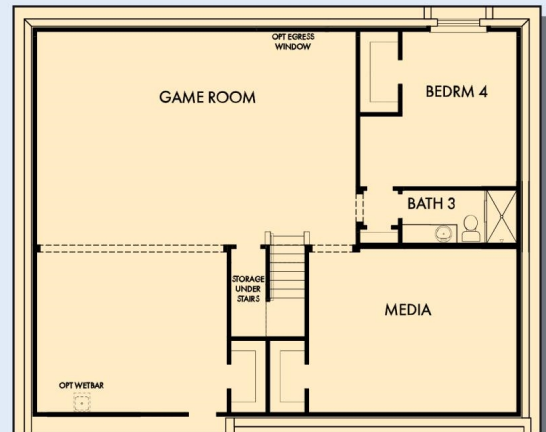
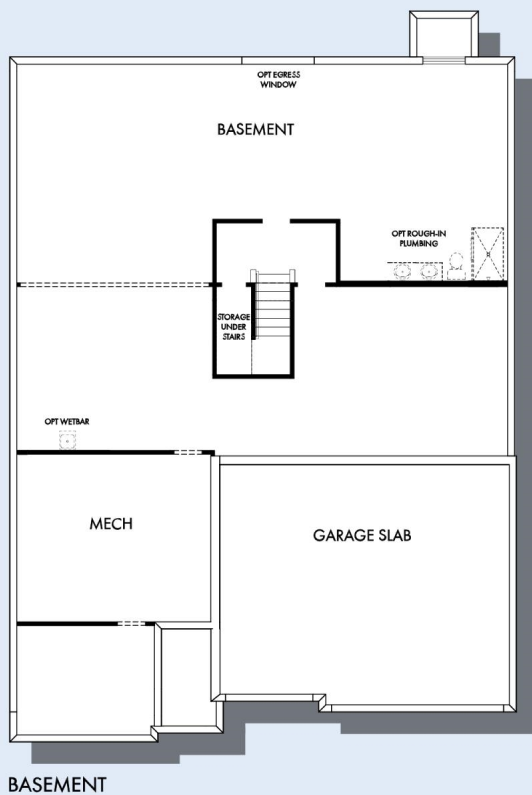


OPTIONAL POWDER  
BATH  
AT HALL WAY

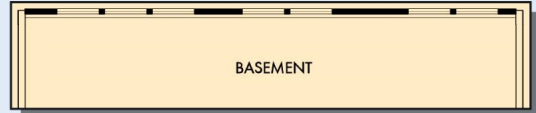


OPTIONAL GUEST SUITE  
AT BEDROOM 2 AND 3

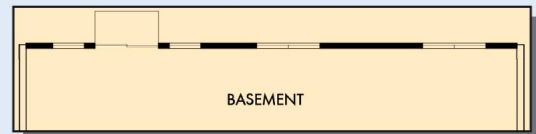
# THE BROMLEY



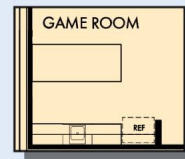
OPTIONAL GAME ROOM WITH MEDIA, BEDROOM 4 AND BATH 3 AT BASEMENT



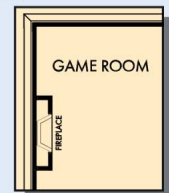
OPTIONAL DAYLIGHT AT BASEMENT



OPTIONAL WALKOUT AT BASEMENT



OPTIONAL WET BAR AT GAME ROOM



OPTIONAL WALL FIREPLACE AT GAME ROOM

For additional options, please visit [DavidWeekleyHomes.com](http://DavidWeekleyHomes.com)

See a David Weekley Homes Sales Consultant for details. Prices, plans, dimensions, features, specifications, materials, and availability of homes or communities are subject to change without notice or obligation. Illustrations are artist's depictions only and may differ from completed improvements. Copyright © 2026 David Weekley Homes - All Rights Reserved. Minneapolis/St. Paul, MN

**DavidWeekleyHomes.com**

