

# THE ELKHOUND



Exterior A

1,713 - 2,333 sq. ft.

3 - 4 Bedrooms

2 - 3 Full Baths

1 - 2 Half Baths

2 Car Garage



Exterior B

**Gigi and Papa**



**THE BESTest - Better than all the rest!**

What an awesome and personal family-oriented company! From touring model homes to selecting "THE ONE" just for us, the experience was delightful and amazing! The entire David Weekley team has been exceptionally wonderful and always available to address any issues we encountered. We have been amazed and impressed by the "Service after the Sale" approach by the David Weekley staff. We would recommend David Weekley homes to anyone. We feel like we are an important member of the Weekley family!

**David Weekley  
Homes**

# THE ELKHOUND

1,713 - 2,333 sq. ft. • 3 - 4 Bedrooms • 2 - 3 Full Baths • 1 - 2 Half Baths • 2 Car Garage



B673 in 2221 AUS

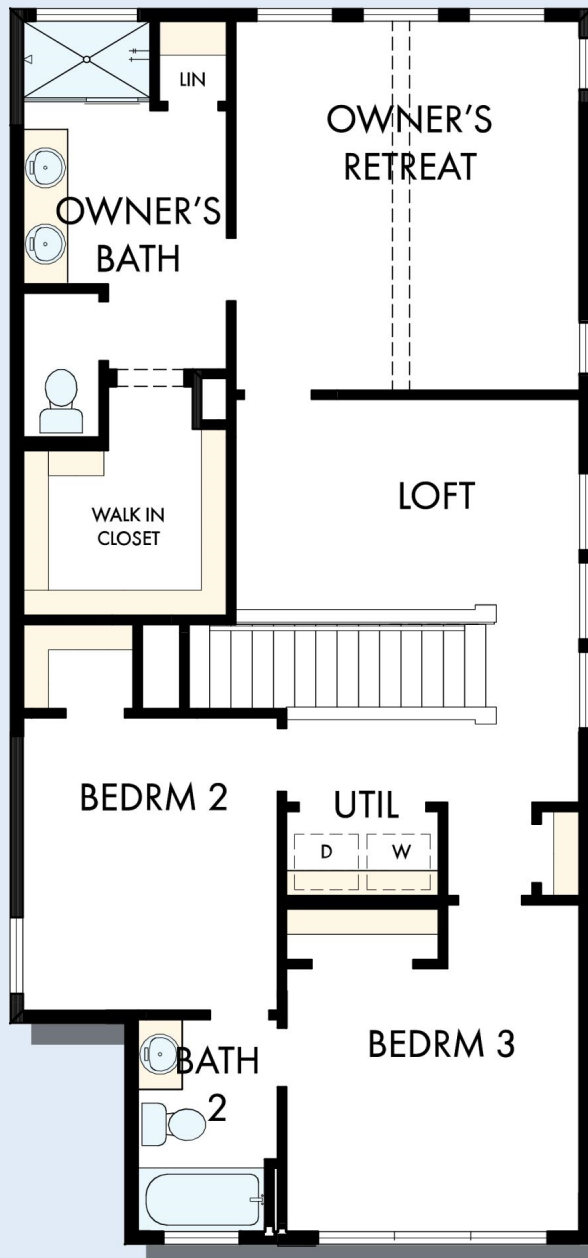
For additional options, please visit [DavidWeekleyHomes.com](http://DavidWeekleyHomes.com)

9/5/2025

**DavidWeekleyHomes.com**



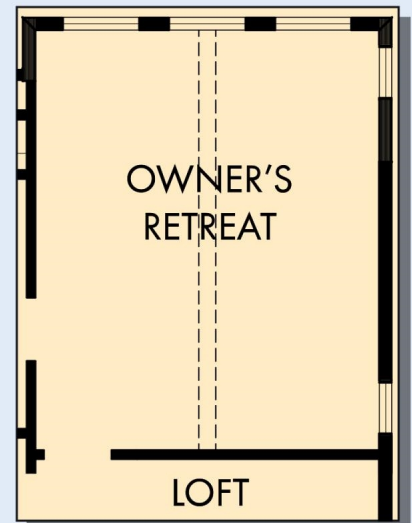
# THE ELKHOUND



SECOND FLOOR



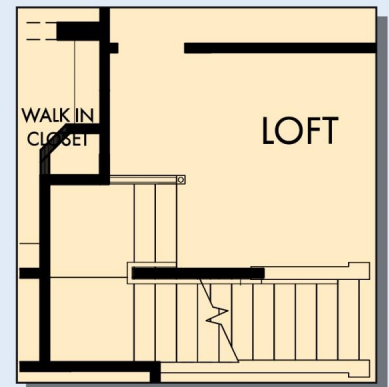
OPTIONAL  
DROP-IN TUB  
WITH SEPARATE  
SHOWER AT  
OWNER'S BATH



OPTIONAL EXTENDED  
OWNER'S RETREAT



OPTIONAL  
SUPER SHOWER  
AT OWNER'S BATH

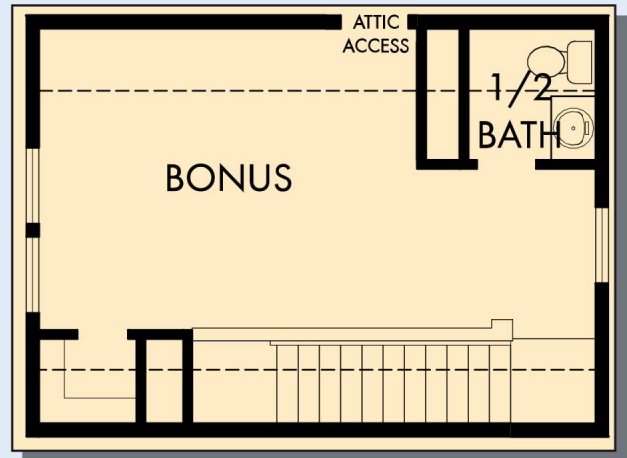


SECOND FLOOR  
WITH OPTIONAL  
THIRD FLOOR  
BONUS

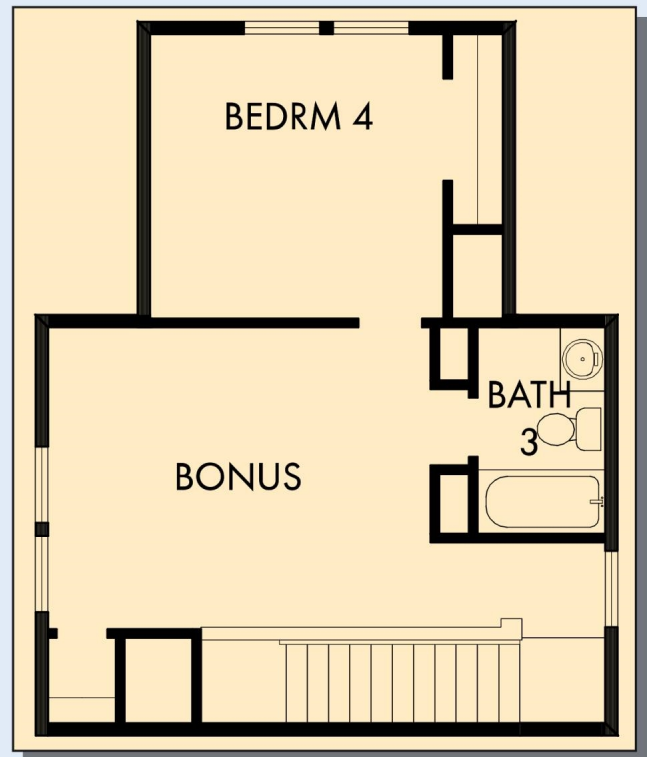
For additional options, please visit [DavidWeekleyHomes.com](http://DavidWeekleyHomes.com)

**DavidWeekleyHomes.com**

# THE ELKHOUND



OPTIONAL THIRD FLOOR BONUS  
WITH HALF BATH



OPTIONAL THIRD FLOOR BONUS  
WITH BEDROOM 4 AND BATH 3

For additional options, please visit [DavidWeekleyHomes.com](http://DavidWeekleyHomes.com)



See a David Weekley Homes Sales Consultant for details.  
Prices, plans, dimensions, features, specifications, materials,  
and availability of homes or communities are subject to  
change without notice or obligation. Illustrations are artist's  
depictions only and may differ from completed improvements.  
Copyright © 2025 David Weekley Homes - All Rights Reserved.  
Austin, TX

**DavidWeekleyHomes.com**