

THE STANDLEY



Exterior A

2,631 - 3,473 sq. ft.

4 - 6 Bedrooms

2 - 3 Full Baths

1 Half Bath

3 Car Garage



Exterior B

Meg S.



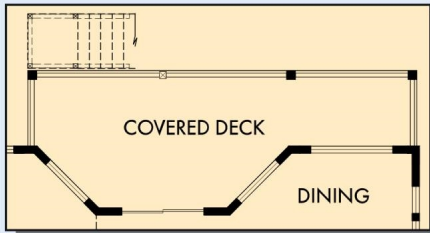
Truly treated us like family!!!

We enjoyed every part of the home building process. It was amazing! Our builder was always keeping us informed and really went above and beyond to ensure that we love our home. Our warranty rep is outstanding and continues to take care of our every need. I couldn't have asked for a better experience. Our builder and warranty rep continue to be there for us as a family. While our interactions with the DW Family have been highly professional, we are also lucky enough to be able to call them some of our greatest friends! Wouldn't change a thing!

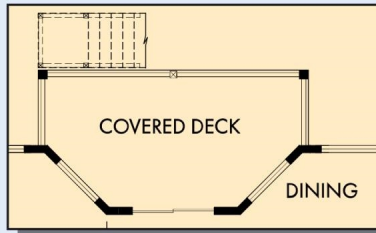
David Weekley
Homes

THE STANDLEY

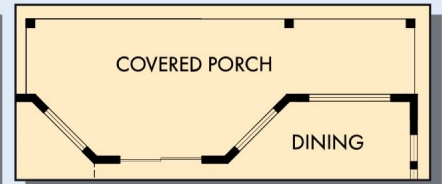
2,631 - 3,473 sq. ft. • 4 - 6 Bedrooms • 2 - 3 Full Baths • 1 Half Bath • 3 Car Garage



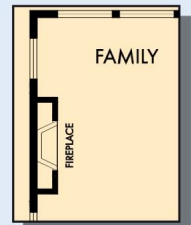
OPTIONAL EXTENDED COVERED DECK WITH
OPTIONAL DAYLIGHT/WALKOUT BASEMENT



FIRST FLOOR WITH OPTIONAL
WALKOUT/DAYLIGHT BASEMENT



OPTIONAL EXTENDED COVERED PORCH



OPTIONAL WALL
FIREPLACE AT FAMILY



THE STANDLEY



OPTIONAL SUPER SHOWER
AT OWNER'S BATH



OPTIONAL FREE STANDING
TUB WITH SEPARATE SHOWER
AT OWNER'S BATH

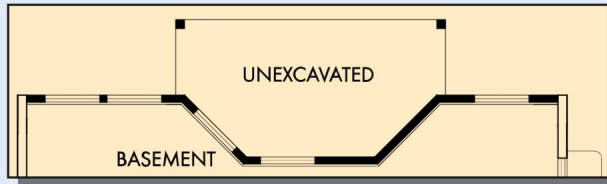


SECOND FLOOR

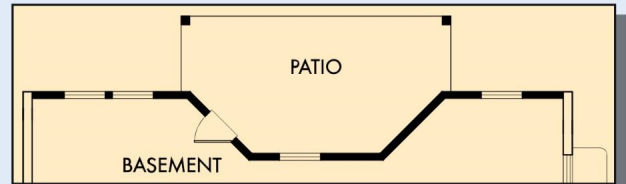
For additional options, please visit DavidWeekleyHomes.com

DavidWeekleyHomes.com

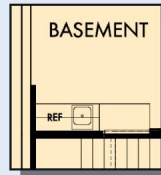
THE STANDLEY



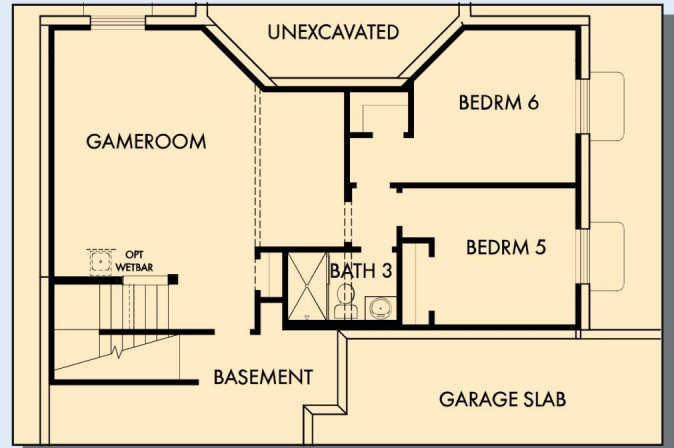
OPTIONAL DAYLIGHT AT BASEMENT



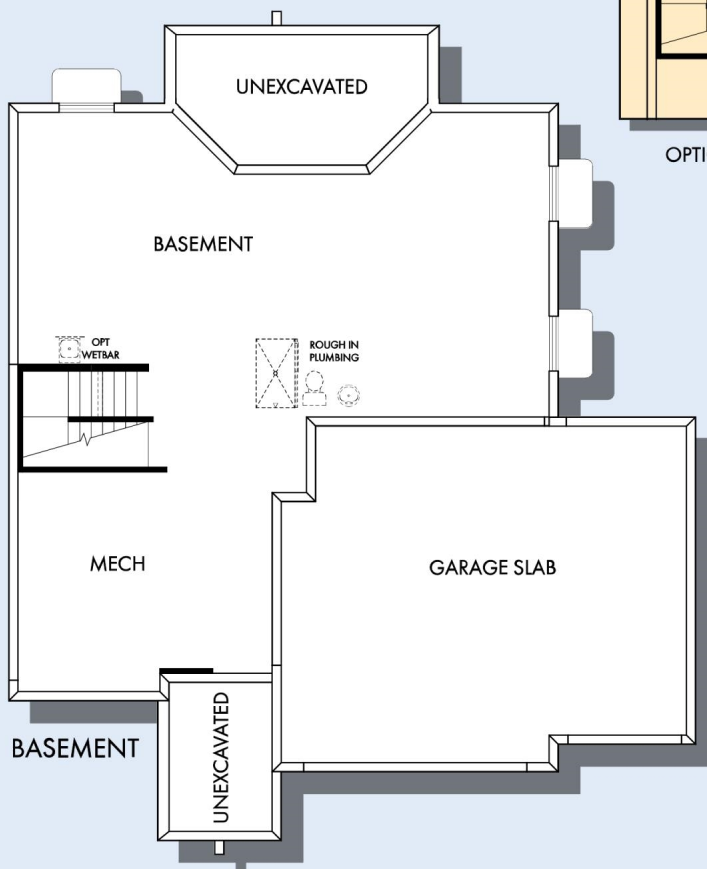
OPTIONAL WALKOUT AT BASEMENT



OPTIONAL WETBAR AT GAME ROOM



OPTIONAL GAMEROOM WITH BEDROOM 5 AND 6 AND BATH 3



For additional options, please visit DavidWeekleyHomes.com

See a David Weekley Homes Sales Consultant for details.
Prices, plans, dimensions, features, specifications, materials,
and availability of homes or communities are subject to
change without notice or obligation. Illustrations are artist's
depictions only and may differ from completed improvements.
Copyright © 2026 David Weekley Homes - All Rights Reserved.
Denver, CO

DavidWeekleyHomes.com

