

# THE JULIEN



Exterior A



Exterior B

2,066 - 2,558 sq. ft.

3 Bedrooms

2 Full Baths

1 - 2 Half Baths

2 Car Garage

## Greg and Jane



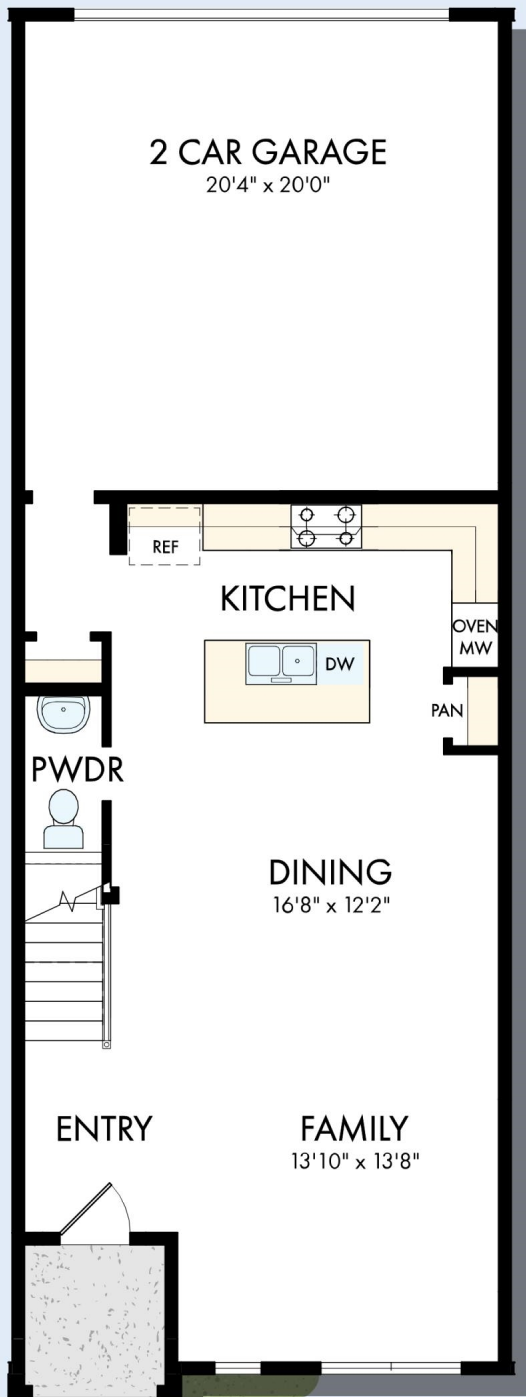
### Exceptional service and experience!

We have been fortunate enough to build several new homes and this was by far the best experience that we've encountered. We actually debated whether or not we wanted to go through the home building process again or simply purchase a pre-owned home or a finished new home. So pleased we built! Our Weekley team (sales associate, design consultant and builder) was very professional, courteous, attentive, responsive and pro-active from beginning to end. They've all become our adopted kids! Great overall experience!

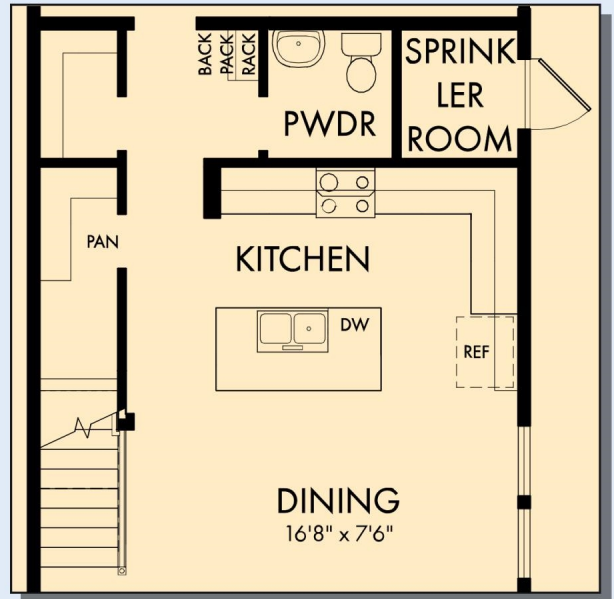
CENTRAL LIVING  
by David Weekley Homes

# THE JULIEN

2,066 - 2,558 sq. ft. • 3 Bedrooms • 2 Full Baths • 1 - 2 Half Baths • 2 Car Garage

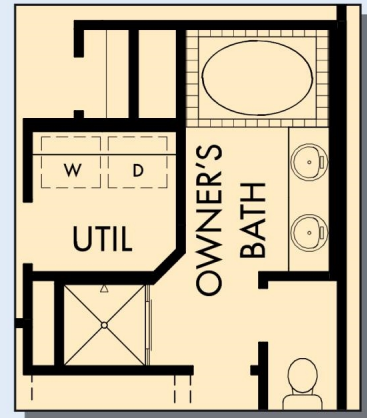
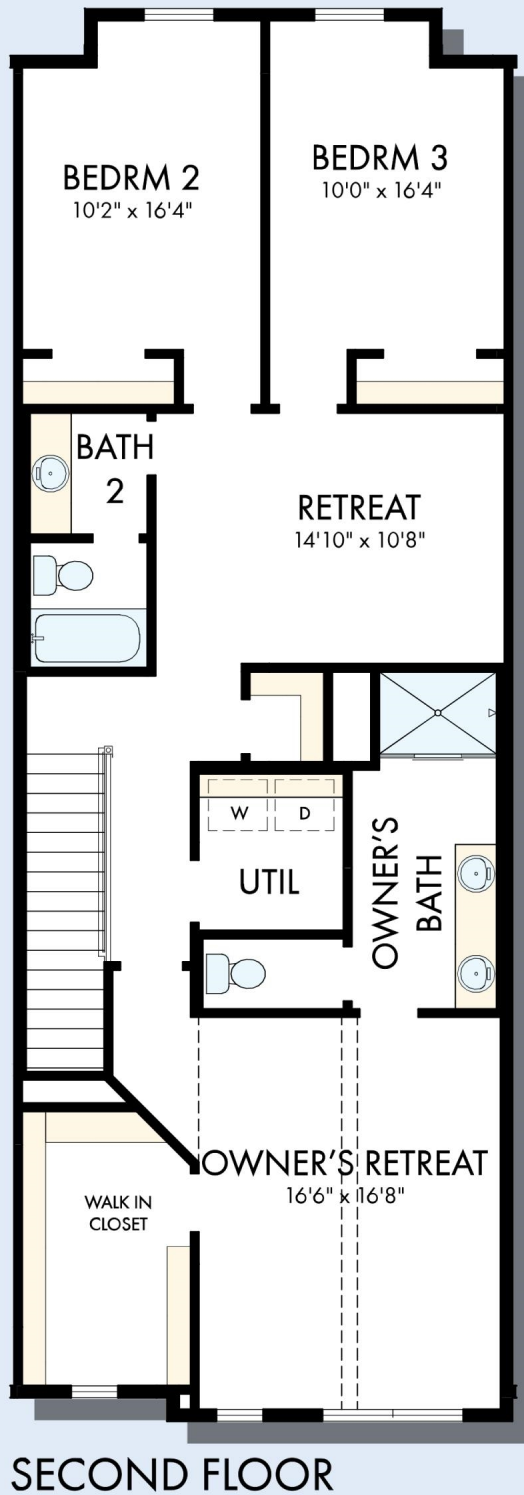


FIRST FLOOR

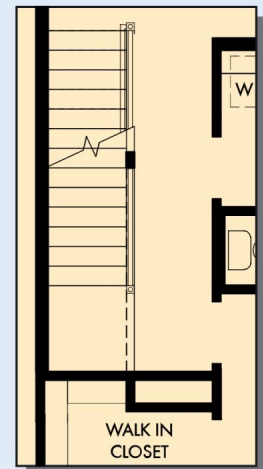


FIRST FLOOR WITH OPTIONAL SPRINKLER ROOM WITH END UNIT

# THE JULIEN



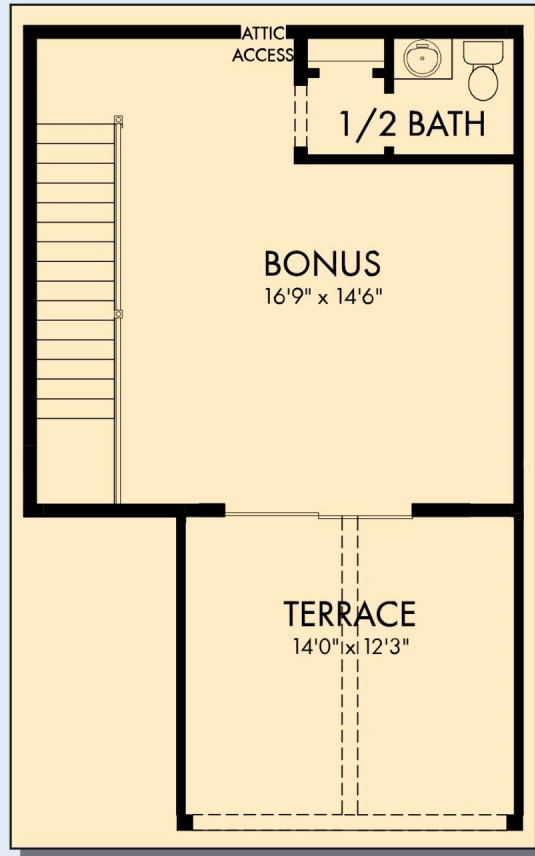
OPTIONAL DROP-IN TUB  
WITH SEPARATE SHOWER  
AT OWNER'S BATH



SECOND FLOOR  
WITH OPTIONAL  
THIRD FLOOR BONUS

For additional options, please visit [DavidWeekleyHomes.com](http://DavidWeekleyHomes.com)

# THE JULIEN



OPTIONAL THIRD FLOOR BONUS  
WITH HALF BATH

For additional options, please visit [DavidWeekleyHomes.com](http://DavidWeekleyHomes.com)

See a David Weekley Homes Sales Consultant for details. Prices, plans, dimensions, features, specifications, materials, and availability of homes or communities are subject to change without notice or obligation. Illustrations are artist's depictions only and may differ from completed improvements. Copyright © 2026 David Weekley Homes - All Rights Reserved. Dallas/Ft. Worth, TX



CENTRAL LIVING  
by David Weekley Homes