

THE TOMWOOD

sq. ft.

Bedrooms

Full Baths

Half Baths

Car Garage

David Weekley
Homes

Chelsea



Incredible Experience, Incredible Home!

We trusted the team from Day 1 and couldn't have asked for a better experience. The attention to detail was fantastic, and we felt as if the DWH team had a personal interest in the success of our home. The process was well defined and every team member set very clear expectations. We love every inch of our home, and we'd definitely recommend DWH!

Rich C.

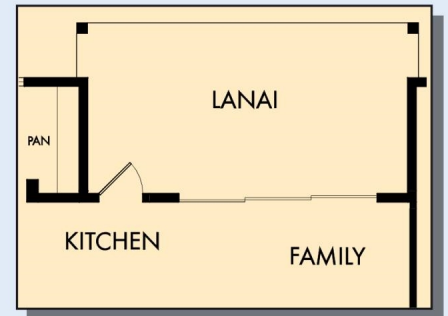


Wonderful Experience!

If there is anything that sets David Weekley apart from other builders it is their customer service. I felt like a member of the family from the first time I walked into the model, to when I received my keys and saw the wonderful housewarming presents that were left for me, up to the present when I see my salesman in the neighborhood. I felt like they really took the time to understand what I was looking for and then came through with my dream home. I would highly recommend David Weekley to anyone looking to buy and/or build a home.

THE TOMWOOD

sq. ft. • Bedrooms • Full Baths • Half Baths • Car Garage



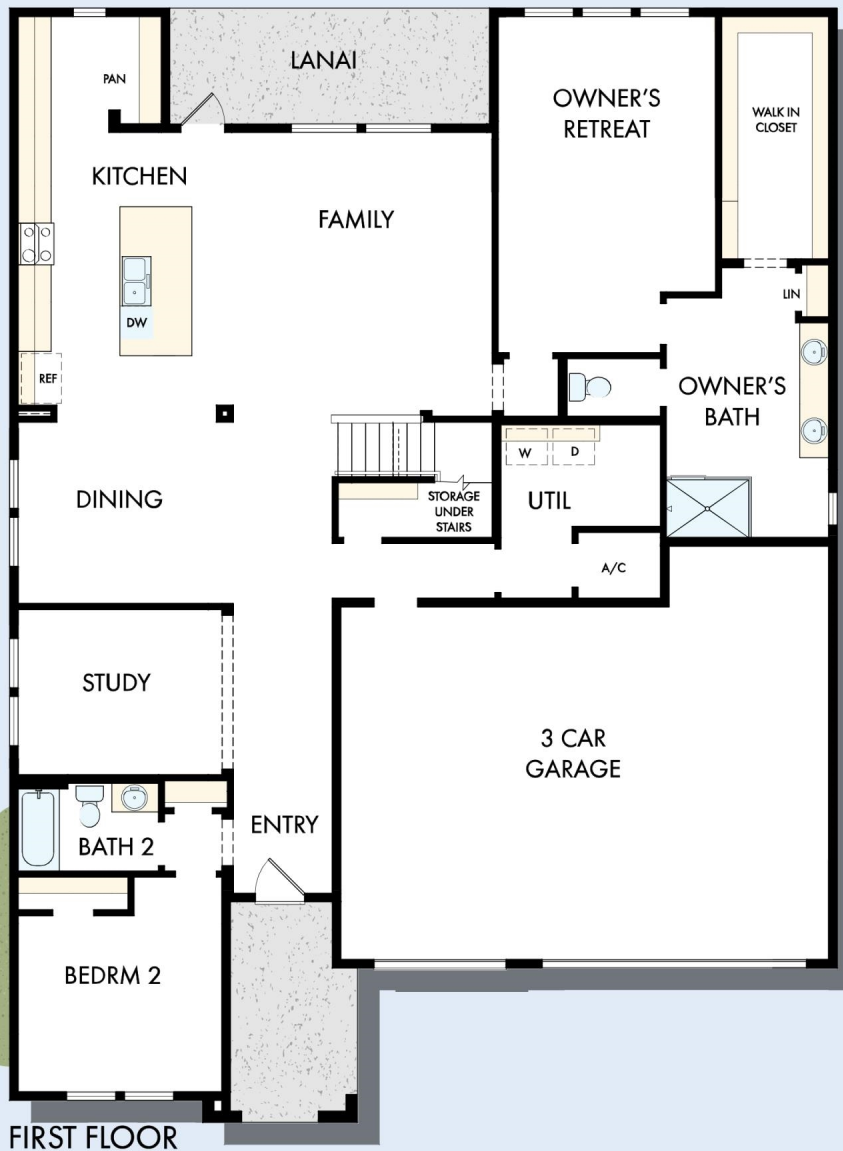
OPTIONAL EXTENDED LANAI WITH SLIDING GLASS DOOR



OPTIONAL SLIDE-IN TUB WITH SEPARATE SHOWER AT OWNER'S BATH



OPTIONAL SUPER SHOWER AT OWNER'S BATH



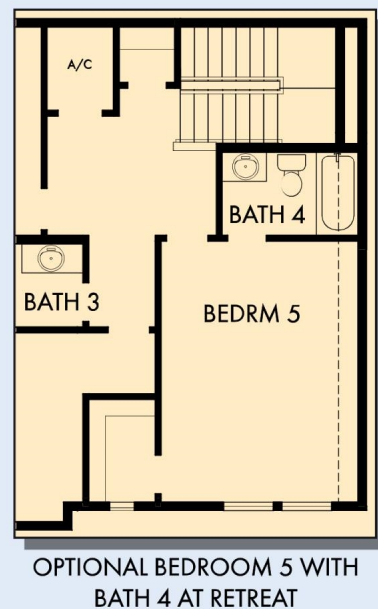
F182 in JAC

For additional options, please visit DavidWeekleyHomes.com

1/13/2026

DavidWeekleyHomes.com

THE TOMWOOD



For additional options, please visit DavidWeekleyHomes.com



See a David Weekley Homes Sales Consultant for details.
Prices, plans, dimensions, features, specifications, materials,
and availability of homes or communities are subject to
change without notice or obligation. Illustrations are artist's
depictions only and may differ from completed improvements.
Copyright © 2026 David Weekley Homes - All Rights Reserved.
Jacksonville, FL

DavidWeekleyHomes.com