

THE SATINWOOD



Exterior D



Exterior E

2,676 - 2,689 sq. ft.

4 - 6 Bedrooms

2 - 5 Full Baths

1 Half Bath

2 Car Garage

Rich C.



Wonderful Experience!

If there is anything that sets David Weekley apart from other builders it is their customer service. I felt like a member of the family from the first time I walked into the model, to when I received my keys and saw the wonderful housewarming presents that were left for me, up to the present when I see my salesman in the neighborhood. I felt like they really took the time to understand what I was looking for and then came through with my dream home. I would highly recommend David Weekley to anyone looking to buy and/or build a home.

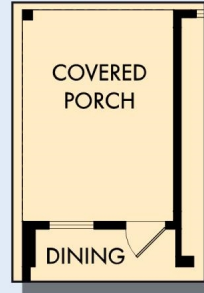
David Weekley
Homes

THE SATINWOOD

2,676 - 2,689 sq. ft. • 4 - 6 Bedrooms • 2 - 5 Full Baths • 1 Half Bath • 2 Car Garage



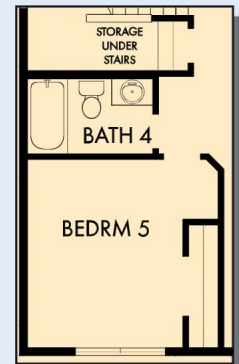
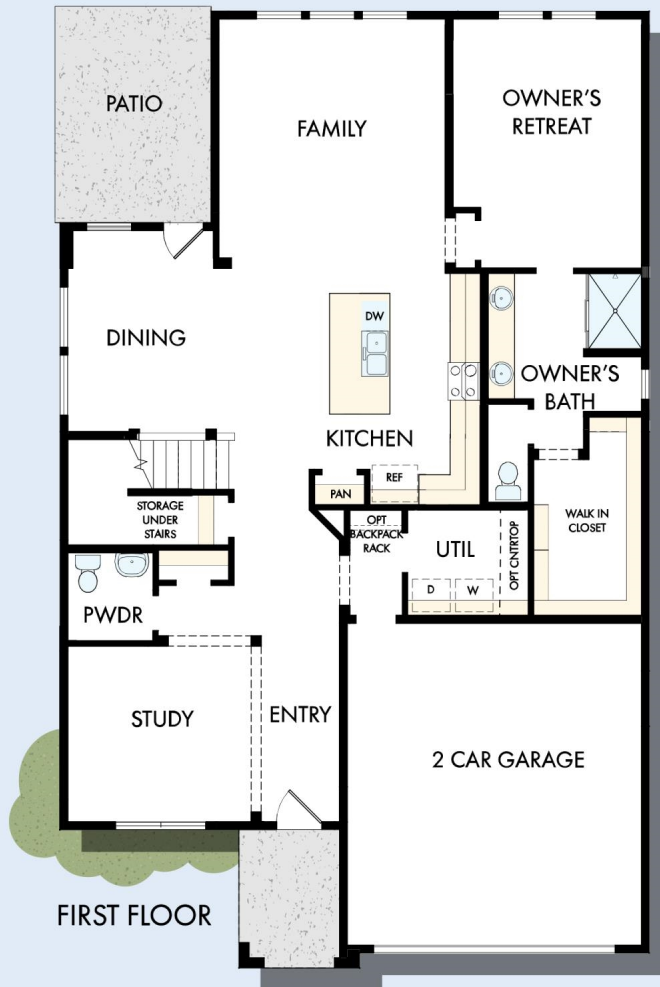
OPTIONAL FREE
STANDING TUB WITH
SEPARATE SHOWER
AT OWNER'S BATH



OPTIONAL COVERED
PORCH AT DINING

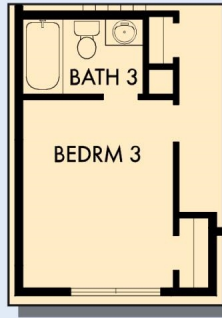


OPTIONAL SUPER
SHOWER AT
OWNER'S BATH



OPTIONAL BEDROOM 5
WITH BATH 4 AT STUDY

THE SATINWOOD



OPTIONAL BATH 3
AT BEDROOM 3



SECOND FLOOR

For additional options, please visit DavidWeekleyHomes.com

See a David Weekley Homes Sales Consultant for details.
Prices, plans, dimensions, features, specifications, materials,
and availability of homes or communities are subject to
change without notice or obligation. Illustrations are artist's
depictions only and may differ from completed improvements.
Copyright © 2026 David Weekley Homes - All Rights Reserved.
Nashville, TN



DavidWeekleyHomes.com