

# THE KIMBALL



Exterior A

3,012 - 3,243 sq. ft.

4 - 5 Bedrooms

4 - 5 Full Baths

1 Half Bath

2 Car Garage



Exterior B

**Crystal W.**



## Welcome Home

My DWHomes experience has been truly 5-stars! From a floorplan concept, reserving a lot filled with dirt, the homebuilding project, to "Welcome Home", the entire process has been amazing. The team provided regular feedback and were always available to address questions and concerns. I was sold on the quality features. The entire team's availability and service has been exceptional before and after closing. Looking forward to enjoying our new home and neighbors for many years to come!

**David Weekley  
Homes**

# THE KIMBALL

3,012 - 3,243 sq. ft. • 4 - 5 Bedrooms • 4 - 5 Full Baths • 1 Half Bath • 2 Car Garage



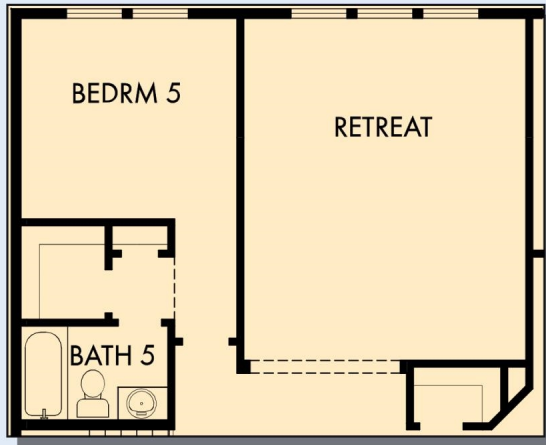
W036 in 4688 ATL

For additional options, please visit [DavidWeekleyHomes.com](http://DavidWeekleyHomes.com)

2/4/2026

**DavidWeekleyHomes.com**

# THE KIMBALL



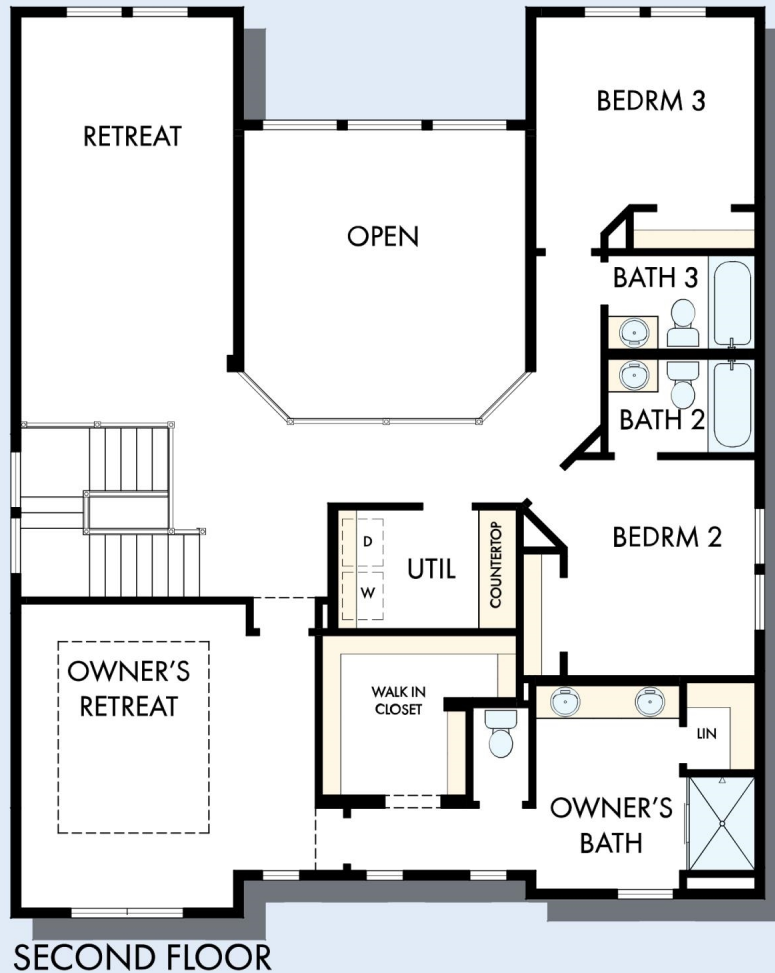
OPTIONAL BEDROOM 5 WITH BATH 5 AT RETREAT



OPTIONAL FREE STANDING TUB WITH SEPARATE SHOWER AT OWNER'S BATH



OPTIONAL SUPER SHOWER AT OWNER'S BATH



SECOND FLOOR

For additional options, please visit [DavidWeekleyHomes.com](http://DavidWeekleyHomes.com)



See a David Weekley Homes Sales Consultant for details. Prices, plans, dimensions, features, specifications, materials, and availability of homes or communities are subject to change without notice or obligation. Illustrations are artist's depictions only and may differ from completed improvements. Copyright © 2026 David Weekley Homes - All Rights Reserved. Atlanta, GA

**DavidWeekleyHomes.com**