

# THE HOSFORD



Exterior A

1,587 - 1,592 sq. ft.

3 Bedrooms

2 Full Baths

1 Half Bath

2 Car Garage



Exterior B

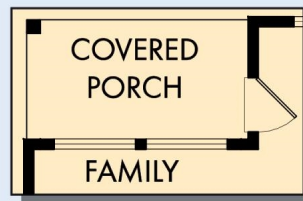


Exterior C

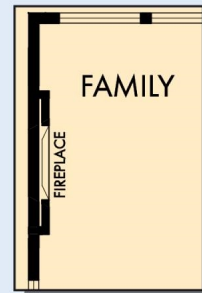
David Weekley  
Homes

# THE HOSFORD

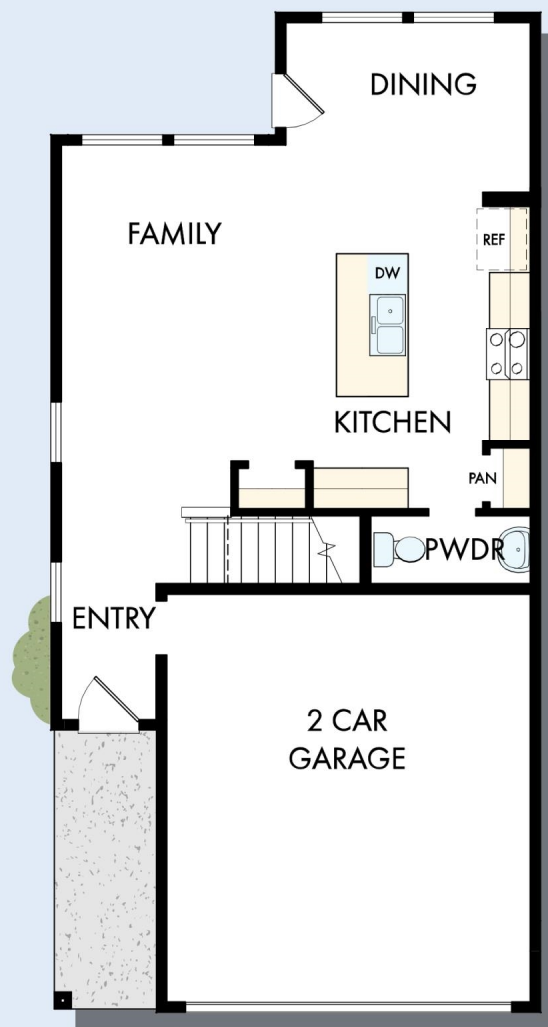
1,587 - 1,592 sq. ft. • 3 Bedrooms • 2 Full Baths • 1 Half Bath • 2 Car Garage



OPTIONAL COVERED  
PORCH AT FAMILY



OPTIONAL WALL  
FIREPLACE AT  
FAMILY



FIRST FLOOR

A702 in 6833 POR

For additional options, please visit [DavidWeekleyHomes.com](http://DavidWeekleyHomes.com)

9/18/2025

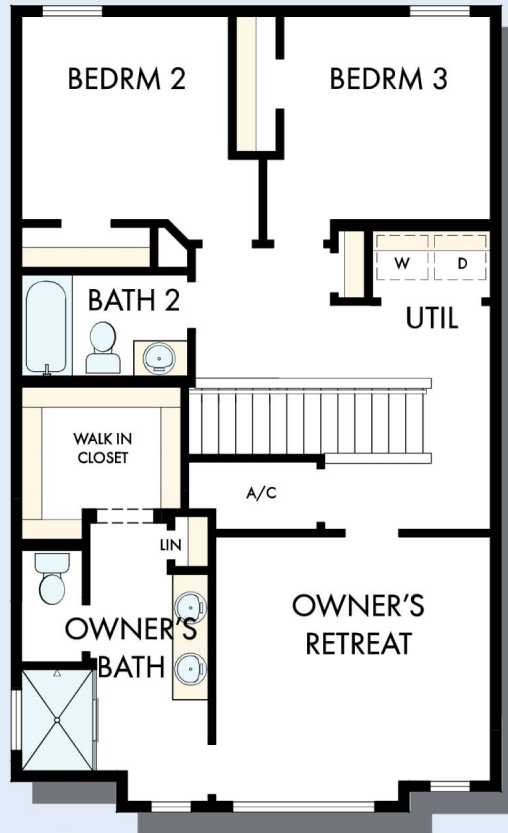
**DavidWeekleyHomes.com**



# THE HOSFORD



OPTIONAL SUPER  
SHOWER AT  
OWNER'S BATH



SECOND FLOOR

For additional options, please visit [DavidWeekleyHomes.com](http://DavidWeekleyHomes.com)



See a David Weekley Homes Sales Consultant for details.  
Prices, plans, dimensions, features, specifications, materials,  
and availability of homes or communities are subject to  
change without notice or obligation. Illustrations are artist's  
depictions only and may differ from completed improvements.  
Copyright © 2025 David Weekley Homes - All Rights Reserved.  
POR, OR

## DavidWeekleyHomes.com