

# THE GLENMEADE



Exterior F

3,221 - 4,000 sq. ft.

4 - 5 Bedrooms

3 Full Baths

1 Half Bath

3 Car Garage



Exterior E

**Lauren L.**



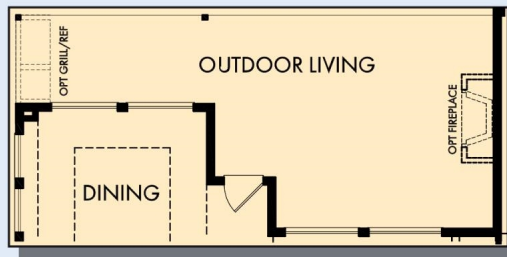
### **Home is where the heart is.**

Years we waited to buy a house. Painful years of raising children in someone else's home. Years I got to ponder what it would be like to have something of my own. I envisioned my children sitting in their home, playing in their rooms, running through their yard...and the days of waiting were over, all of my research paid off. We bought the house of my dreams and were given the best sales associate and builder, down to my warranty specialist. Everything was easy and seamless. I felt like we were working together, like a team. Now, I have a beautiful house that I know was built with integrity. I could not be more grateful.

**David Weekley  
Homes**

# THE GLENMEADE

3,221 - 4,000 sq. ft. • 4 - 5 Bedrooms • 3 Full Baths • 1 Half Bath • 3 Car Garage



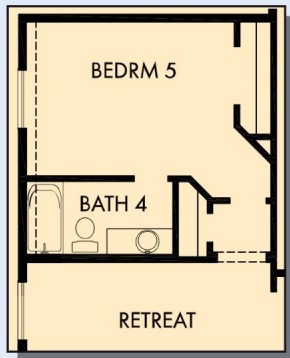
OPTIONAL OUTDOOR LIVING AT DINING AND FAMILY



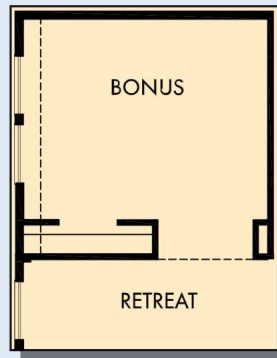
FIRST FLOOR



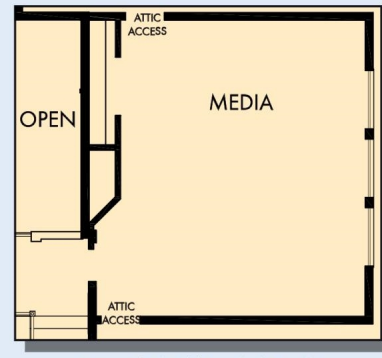
# THE GLENMEADE



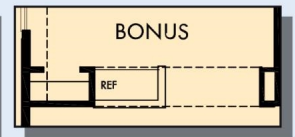
OPTIONAL BEDROOM 5 WITH  
BATH 4 AT RETREAT



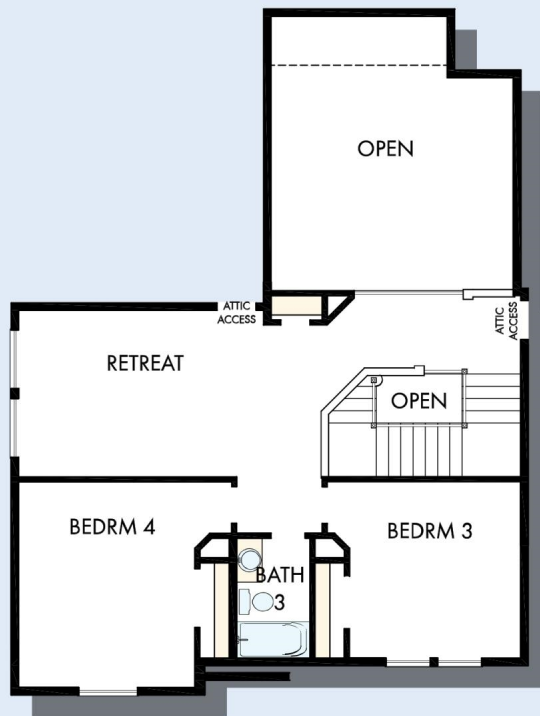
OPTIONAL BONUS AT RETREAT



OPTIONAL MEDIA AT STAIRS



OPTIONAL BAR AT BONUS



SECOND FLOOR

For additional options, please visit [DavidWeekleyHomes.com](http://DavidWeekleyHomes.com)

**DavidWeekleyHomes.com**



See a David Weekley Homes Sales Consultant for details. Prices, plans, dimensions, features, specifications, materials, and availability of homes or communities are subject to change without notice or obligation. Illustrations are artist's depictions only and may differ from completed improvements. Copyright © 2024 David Weekley Homes - All Rights Reserved. Houston, TX