

THE LIGHTWOOD



Exterior A



Exterior B

1,767 - 2,149 sq. ft.

3 - 4 Bedrooms

2 - 3 Full Baths

1 - 2 Half Baths

2 Car Garage

Greg and Jane



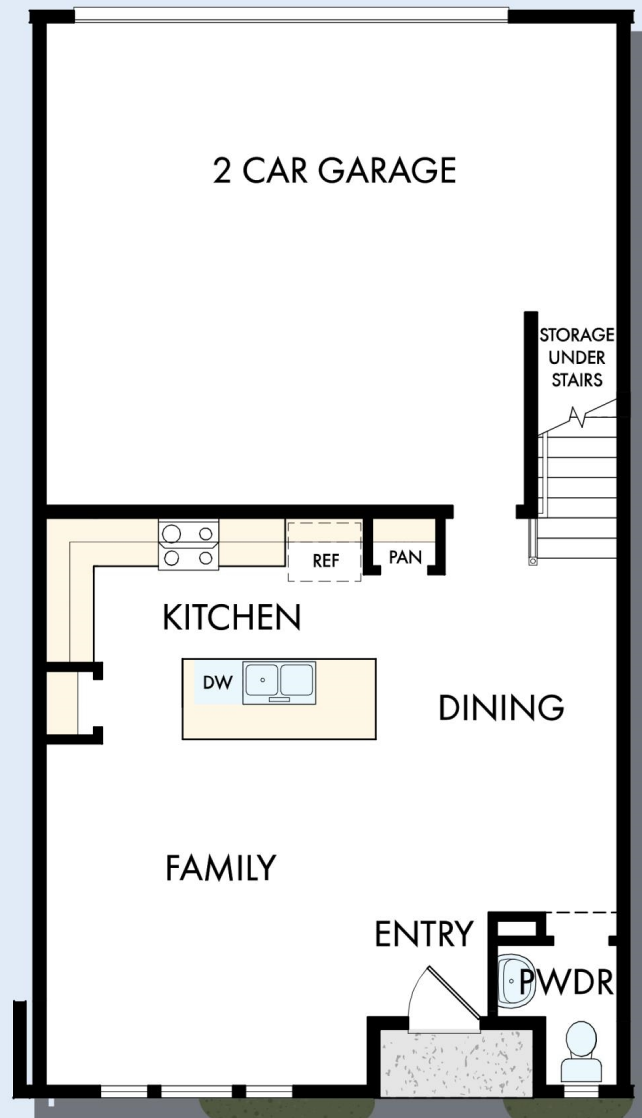
Exceptional service and experience!

We have been fortunate enough to build several new homes and this was by far the best experience that we've encountered. We actually debated whether or not we wanted to go through the home building process again or simply purchase a pre-owned home or a finished new home. So pleased we built! Our Weekley team (sales associate, design consultant and builder) was very professional, courteous, attentive, responsive and pro-active from beginning to end. They've all become our adopted kids! Great overall experience!

**David Weekley
Homes**

THE LIGHTWOOD

1,767 - 2,149 sq. ft. • 3 - 4 Bedrooms • 2 - 3 Full Baths • 1 - 2 Half Baths • 2 Car Garage



FIRST FLOOR

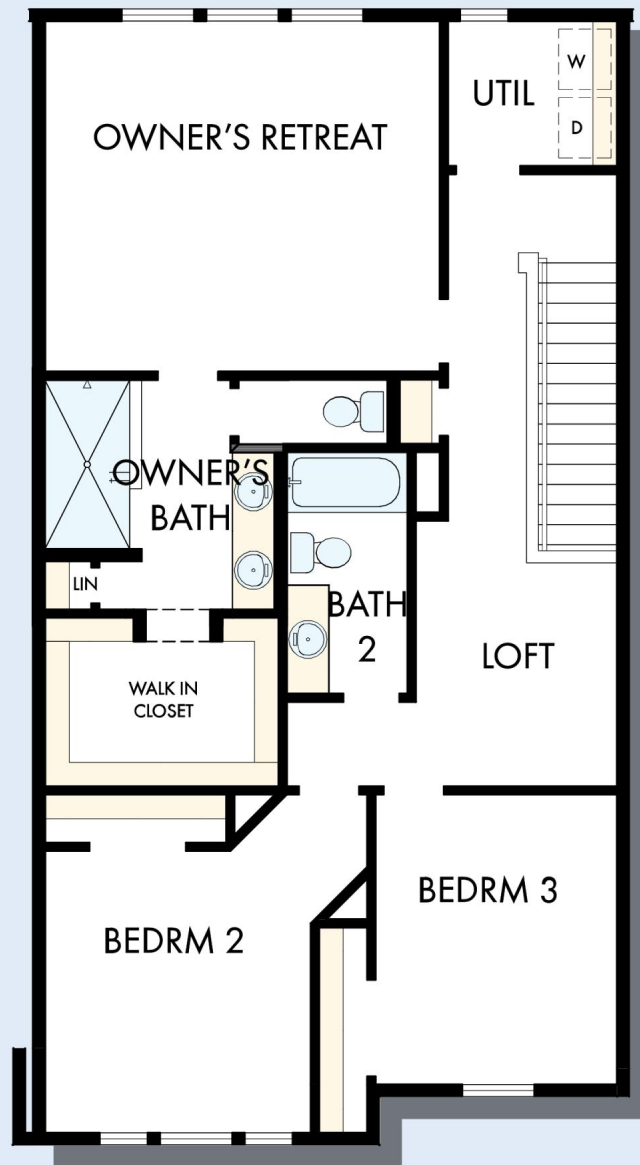
A245 in 4581 CSC

For additional options, please visit DavidWeekleyHomes.com

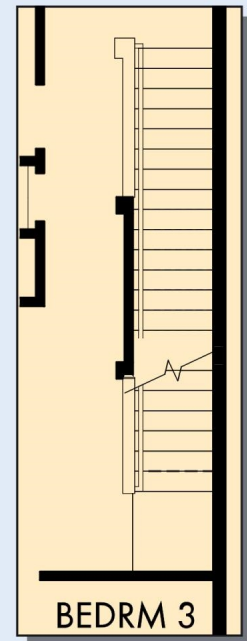
5/12/2025

DavidWeekleyHomes.com

THE LIGHTWOOD



SECOND FLOOR



SECOND FLOOR
WITH OPTIONAL
THIRD FLOOR
BONUS

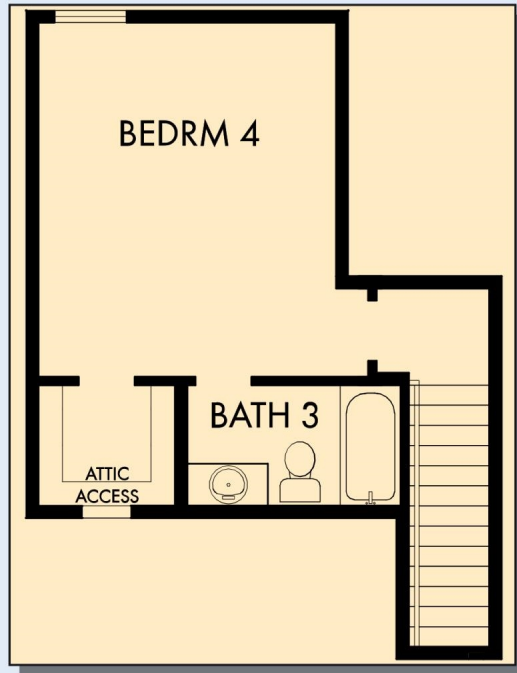


OPTIONAL FREE
STANDING TUB WITH
SEPARATE SHOWER
AT OWNER'S BATH

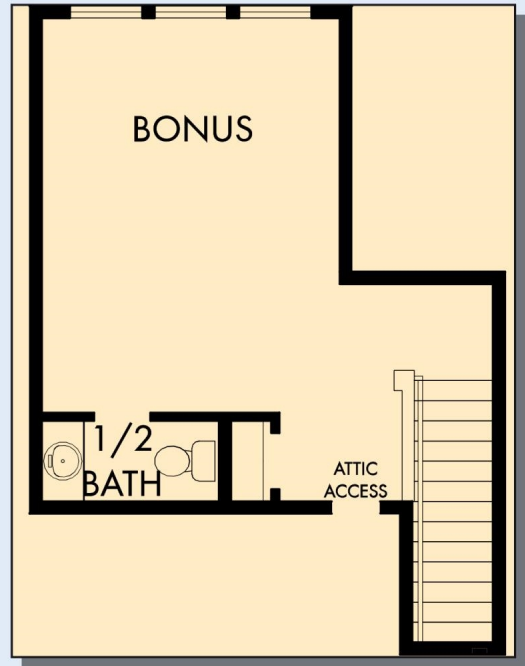
For additional options, please visit DavidWeekleyHomes.com

DavidWeekleyHomes.com

THE LIGHTWOOD



OPTIONAL THIRD FLOOR WITH
BEDROOM 4 AND BATH 3



OPTIONAL THIRD FLOOR BONUS
WITH HALF BATH

For additional options, please visit DavidWeekleyHomes.com



See a David Weekley Homes Sales Consultant for details.
Prices, plans, dimensions, features, specifications, materials,
and availability of homes or communities are subject to
change without notice or obligation. Illustrations are artist's
depictions only and may differ from completed improvements.
Copyright © 2025 David Weekley Homes - All Rights Reserved.
Charleston, SC

DavidWeekleyHomes.com