

THE SATINWOOD



Exterior A

2,676 - 3,961 sq. ft.

4 - 6 Bedrooms

2 - 5 Full Baths

1 Half Bath

2 Car Garage



Exterior C

Lauren L.



Home is where the heart is.

Years we waited to buy a house. Painful years of raising children in someone else's home. Years I got to ponder what it would be like to have something of my own. I envisioned my children sitting in their home, playing in their rooms, running through their yard...and the days of waiting were over, all of my research paid off. We bought the house of my dreams and were given the best sales associate and builder, down to my warranty specialist. Everything was easy and seamless. I felt like we were working together, like a team. Now, I have a beautiful house that I know was built with integrity. I could not be more grateful.

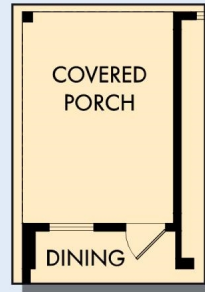
**David Weekley
Homes**

THE SATINWOOD

2,676 - 3,961 sq. ft. • 4 - 6 Bedrooms • 2 - 5 Full Baths • 1 Half Bath • 2 Car Garage



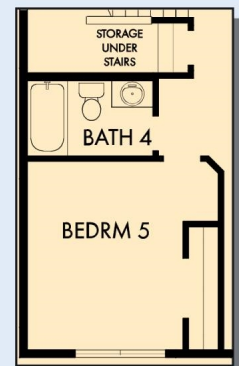
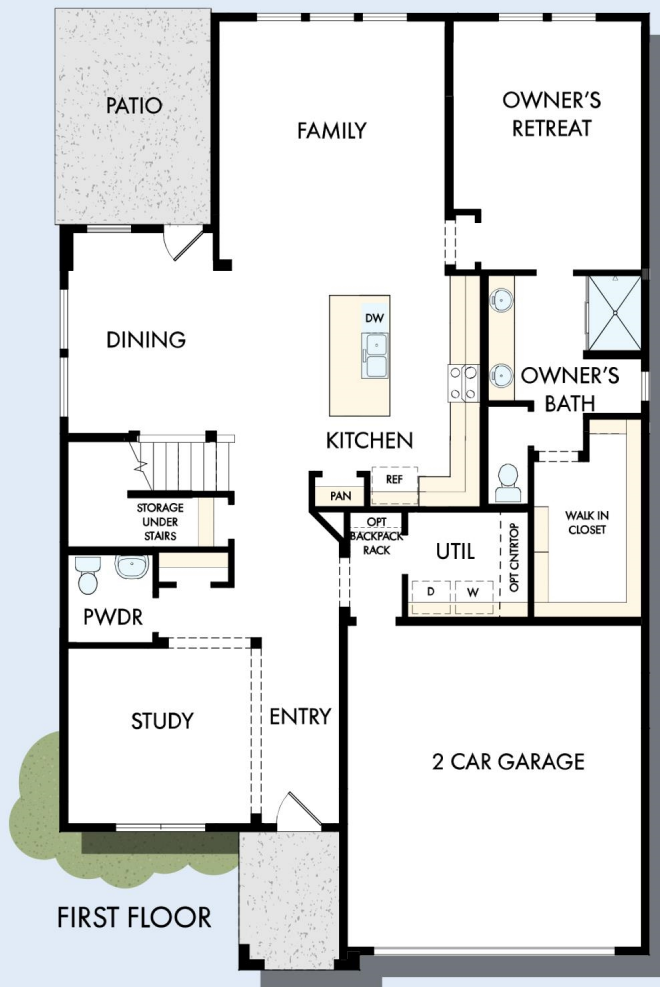
OPTIONAL SLIDE-IN
TUB WITH SEPARATE
SHOWER AT
OWNER'S BATH



OPTIONAL COVERED
PORCH AT DINING

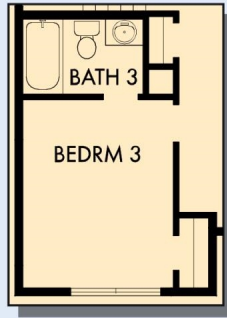


OPTIONAL SUPER
SHOWER AT
OWNER'S BATH



OPTIONAL BEDROOM 5
WITH BATH 4 AT STUDY

THE SATINWOOD



OPTIONAL BATH 3
AT BEDROOM 3



SECOND FLOOR

For additional options, please visit DavidWeekleyHomes.com



See a David Weekley Homes Sales Consultant for details.
Prices, plans, dimensions, features, specifications, materials,
and availability of homes or communities are subject to
change without notice or obligation. Illustrations are artist's
depictions only and may differ from completed improvements.
Copyright © 2025 David Weekley Homes - All Rights Reserved.
Nashville, TN

DavidWeekleyHomes.com