

THE KINTON



Exterior E

2,827 - 4,043 sq. ft.

3 - 5 Bedrooms

2 - 4 Full Baths

1 Half Bath

3 Car Garage



Exterior F

Rich C.



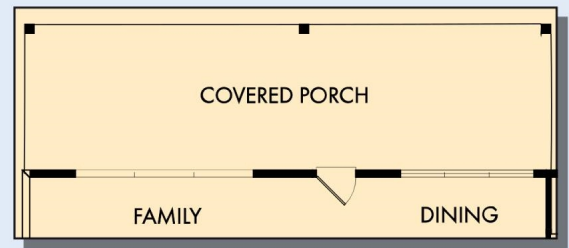
Wonderful Experience!

If there is anything that sets David Weekley apart from other builders it is their customer service. I felt like a member of the family from the first time I walked into the model, to when I received my keys and saw the wonderful housewarming presents that were left for me, up to the present when I see my salesman in the neighborhood. I felt like they really took the time to understand what I was looking for and then came through with my dream home. I would highly recommend David Weekley to anyone looking to buy and/or build a home.

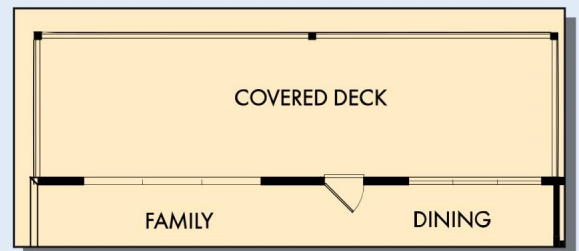
David Weekley
Homes

THE KINTON

2,827 - 4,043 sq. ft. • 3 - 5 Bedrooms • 2 - 4 Full Baths • 1 Half Bath • 3 Car Garage



OPTIONAL EXTENDED COVERED PORCH

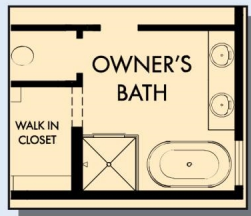


EXTENDED COVERED DECK WITH OPTIONAL BASEMENT



OPTIONAL BEDROOM 4
WITH BATH 3 AT KEEPING
ROOM

THE KINTON



OPTIONAL FREE STANDING
TUB WITH SEPARATE SHOWER
AT OWNER'S BATH



OPTIONAL SUPER SHOWER
AT OWNER'S BATH

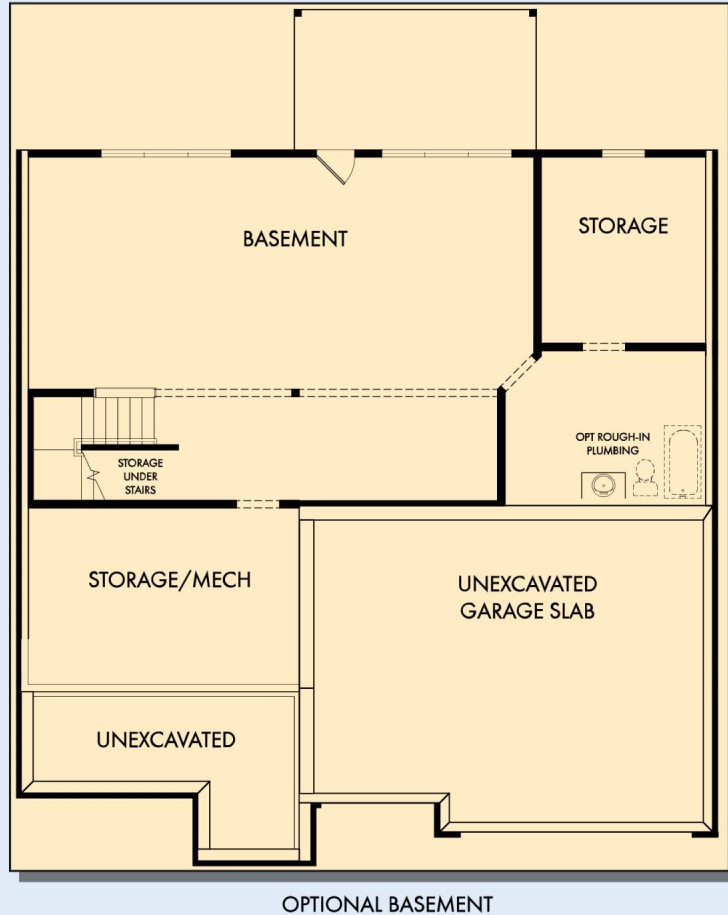


SECOND FLOOR

For additional options, please visit DavidWeekleyHomes.com

DavidWeekleyHomes.com

THE KINTON



For additional options, please visit DavidWeekleyHomes.com

See a David Weekley Homes Sales Consultant for details.
Prices, plans, dimensions, features, specifications, materials,
and availability of homes or communities are subject to
change without notice or obligation. Illustrations are artist's
depictions only and may differ from completed improvements.
Copyright © 2026 David Weekley Homes - All Rights Reserved.
Atlanta, GA



DavidWeekleyHomes.com