

THE HARTMAN



Exterior A

2,761 - 2,787 sq. ft.

3 Bedrooms

3 - 4 Full Baths

1 - 2 Half Baths

3 - 4 Car Garage



Exterior B

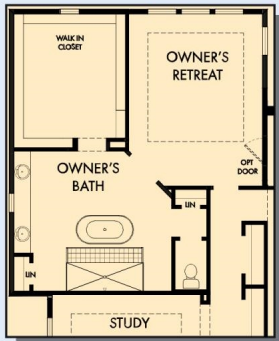


Exterior C

**David Weekley
Homes**

THE HARTMAN

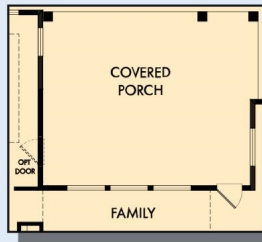
2,761 - 2,787 sq. ft. • 3 Bedrooms • 3 - 4 Full Baths • 1 - 2 Half Baths • 3 - 4 Car Garage



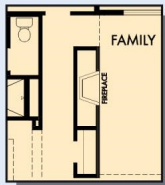
OPTIONAL SUPER SHOWER
AT OWNER'S BATH



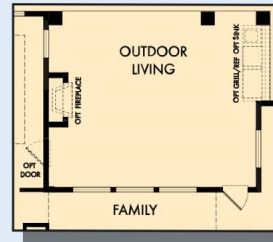
OPTIONAL FREE STANDNIG TUB
WITH SEPARATE SHOWER
AT OWNER'S BATH



OPTIONAL EXTENDED COVERED PORCH
AT FAMILY



OPTIONAL WALL FIREPLACE
AT FAMILY



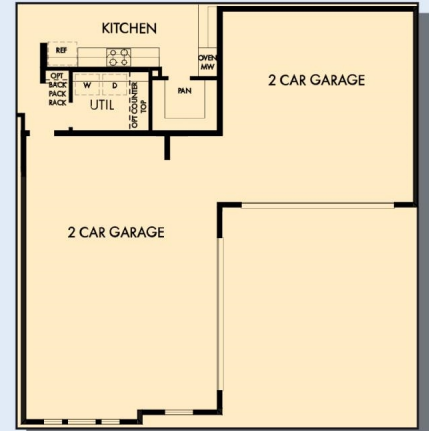
OPTIONAL OUTDOOR LIVING AT FAMILY



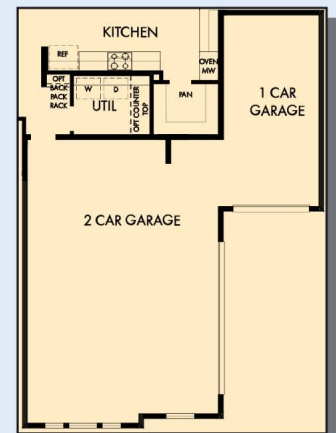
OPTIONAL EXTENDED OWNER'S
RETREAT



FIRST FLOOR WITH OPTIONAL SECOND
FLOOR BONUS



OPTIONAL 4 CAR SPLIT GARAGE



OPTIONAL 3 CAR SPLIT GARAGE



FRIST FLOOR

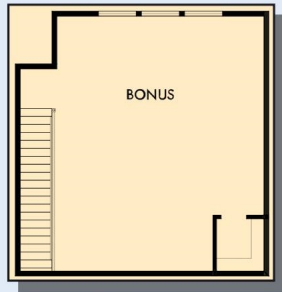
B144 in 2402 SAN

For additional options, please visit DavidWeekleyHomes.com

10/26/2021

DavidWeekleyHomes.com

THE HARTMAN



OPTIONAL SECOND FLOOR BONUS



OPTIONAL SECOND FLOOR BONUS WITH
BATH 4

For additional options, please visit DavidWeekleyHomes.com



See a David Weekley Homes Sales Consultant for details.
Prices, plans, dimensions, features, specifications, materials,
and availability of homes or communities are subject to
change without notice or obligation. Illustrations are artist's
depictions only and may differ from completed improvements.
Copyright © 2021 David Weekley Homes - All Rights Reserved.
San Antonio, TX

DavidWeekleyHomes.com