

# THE SAW MILL



Exterior E

2,775 - 2,862 sq. ft.

4 Bedrooms

3 Full Baths

2 Car Garage



Exterior G1

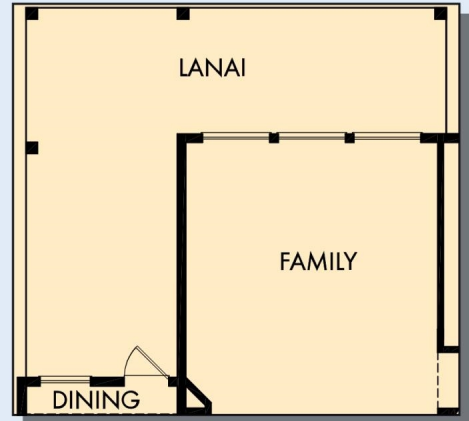
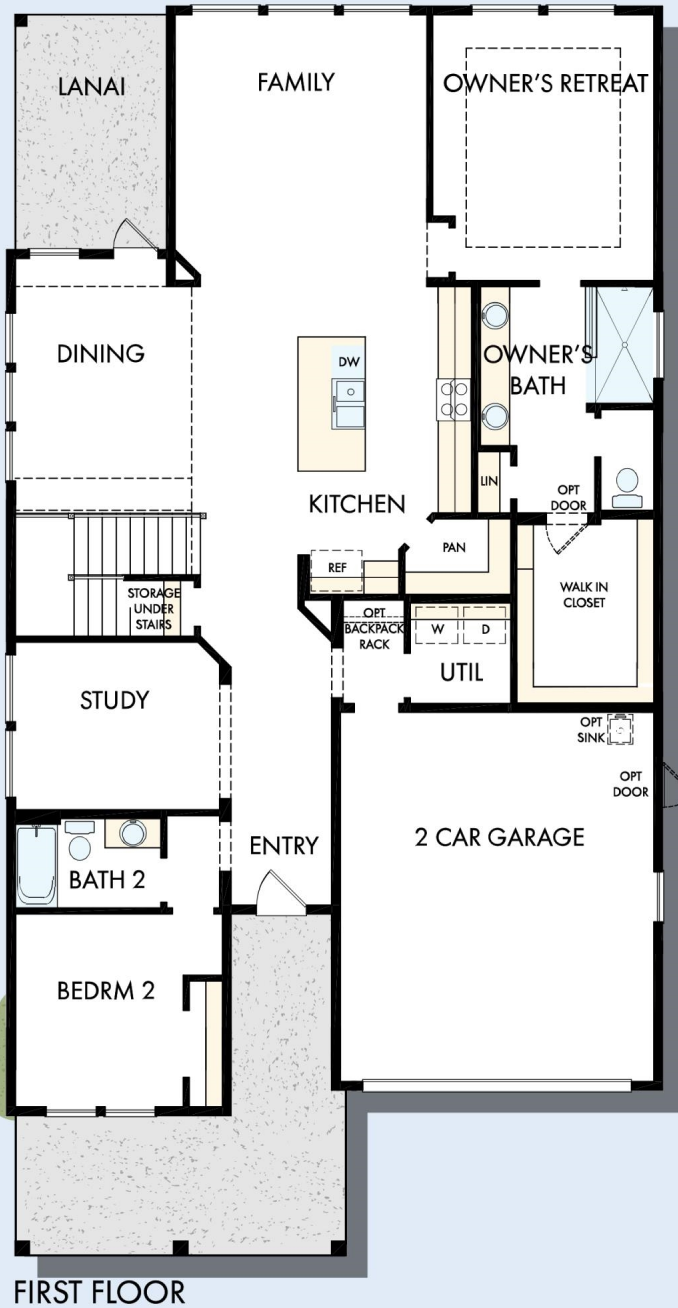


Exterior J

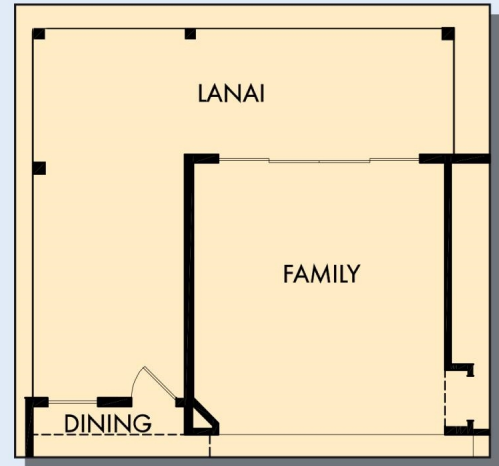
David Weekley  
Homes

# THE SAW MILL

2,775 - 2,862 sq. ft. • 4 Bedrooms • 3 Full Baths • 2 Car Garage



OPTIONAL EXTENDED LANAI AT DINING AND FAMILY



OPTIONAL EXTENDED LANAI WITH SLIDING GLASS DOOR AT FAMILY



OPTIONAL FREE STANDING TUB WITH SEPARATE SHOWER AT OWNER'S BATH

# THE SAW MILL



For additional options, please visit [DavidWeekleyHomes.com](http://DavidWeekleyHomes.com)

See a David Weekley Homes Sales Consultant for details. Prices, plans, dimensions, features, specifications, materials, and availability of homes or communities are subject to change without notice or obligation. Illustrations are artist's depictions only and may differ from completed improvements. Copyright © 2025 David Weekley Homes - All Rights Reserved. Jacksonville, FL

**DavidWeekleyHomes.com**

