

# THE PEPPERMILL



Exterior A

1,774 - 1,791 sq. ft.

3 Bedrooms

2 Full Baths

1 Half Bath

2 Car Garage



Exterior B

**Gigi and Papa**



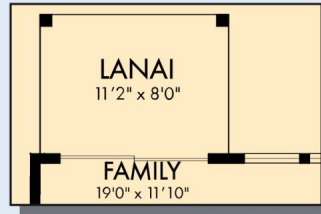
**THE BESTest - Better than all the rest!**

What an awesome and personal family-oriented company! From touring model homes to selecting "THE ONE" just for us, the experience was delightful and amazing! The entire David Weekley team has been exceptionally wonderful and always available to address any issues we encountered. We have been amazed and impressed by the "Service after the Sale" approach by the David Weekley staff. We would recommend David Weekley homes to anyone. We feel like we are an important member of the Weekley family!

**David Weekley  
Homes**

# THE PEPPERMILL

1,774 - 1,791 sq. ft. • 3 Bedrooms • 2 Full Baths • 1 Half Bath • 2 Car Garage

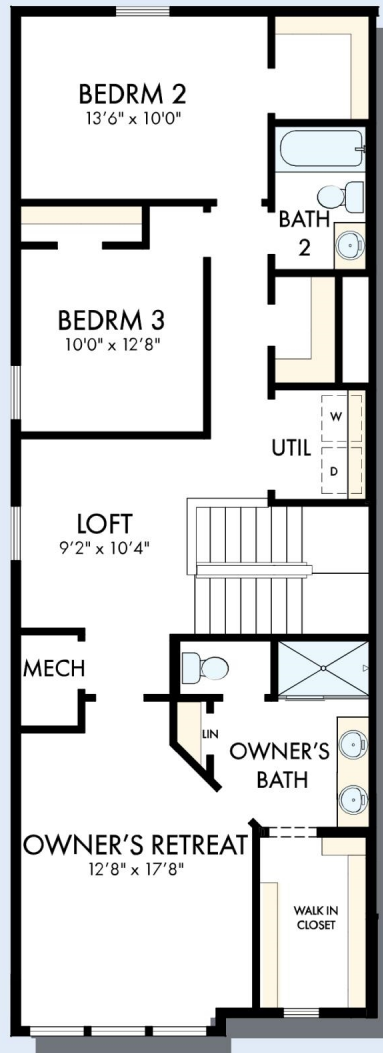


OPTIONAL LANAI WITH SLIDING  
GLASS DOOR AT FAMILY



FIRST FLOOR

# THE PEPPERMILL



SECOND FLOOR

For additional options, please visit [DavidWeekleyHomes.com](http://DavidWeekleyHomes.com)

See a David Weekley Homes Sales Consultant for details.  
Prices, plans, dimensions, features, specifications, materials,  
and availability of homes or communities are subject to  
change without notice or obligation. Illustrations are artist's  
depictions only and may differ from completed improvements.  
Copyright © 2026 David Weekley Homes - All Rights Reserved.  
Tampa, FL

**DavidWeekleyHomes.com**

