

THE PRYOR



Exterior A

2,489 - 3,363 sq. ft.

3 - 5 Bedrooms

2 - 4 Full Baths

1 Half Bath

2 - 3 Car Garage



Exterior B

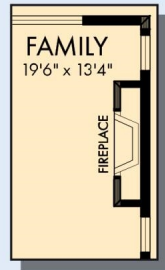


Exterior C

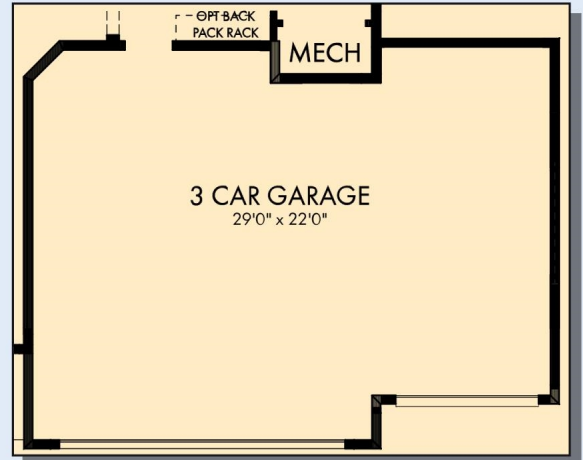
David Weekley
Homes

THE PRYOR

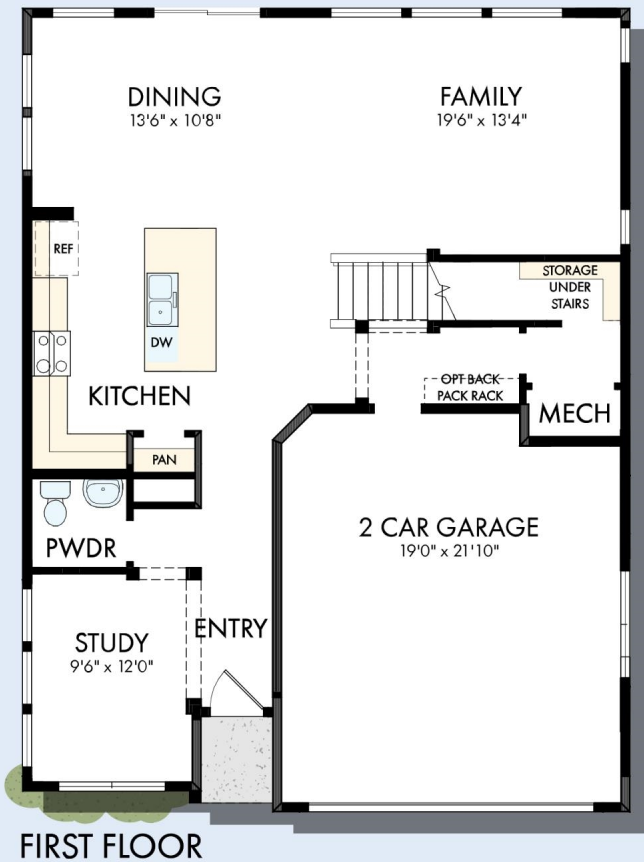
2,489 - 3,363 sq. ft. • 3 - 5 Bedrooms • 2 - 4 Full Baths • 1 Half Bath • 2 - 3 Car Garage



OPTIONAL
WALL FIREPLACE
AT FAMILY



OPTIONAL 3 CAR GARAGE



FIRST FLOOR

THE PRYOR



OPTIONAL BEDROOM 4



OPTIONAL SLIDE IN TUB WITH SEPARATE SHOWER AT OWNER'S BATH



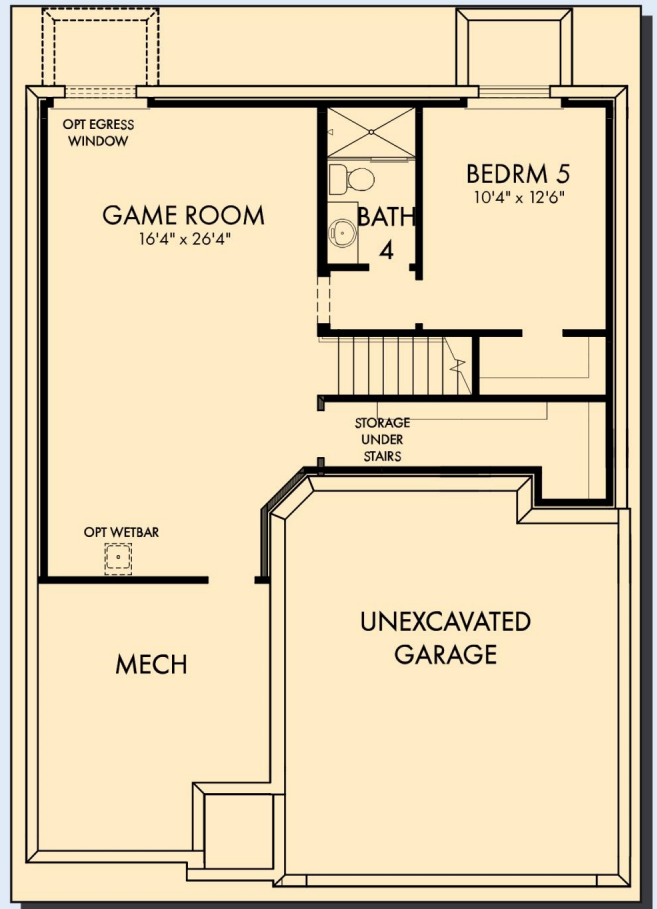
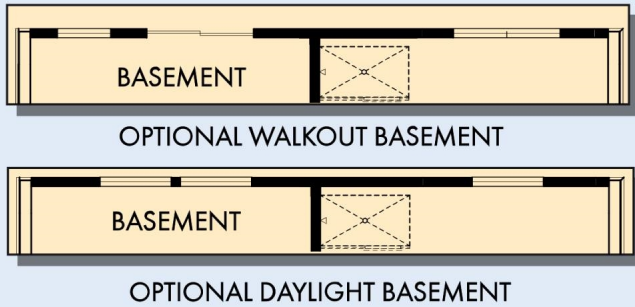
OPTIONAL SUPER SHOWER AT OWNER'S BATH



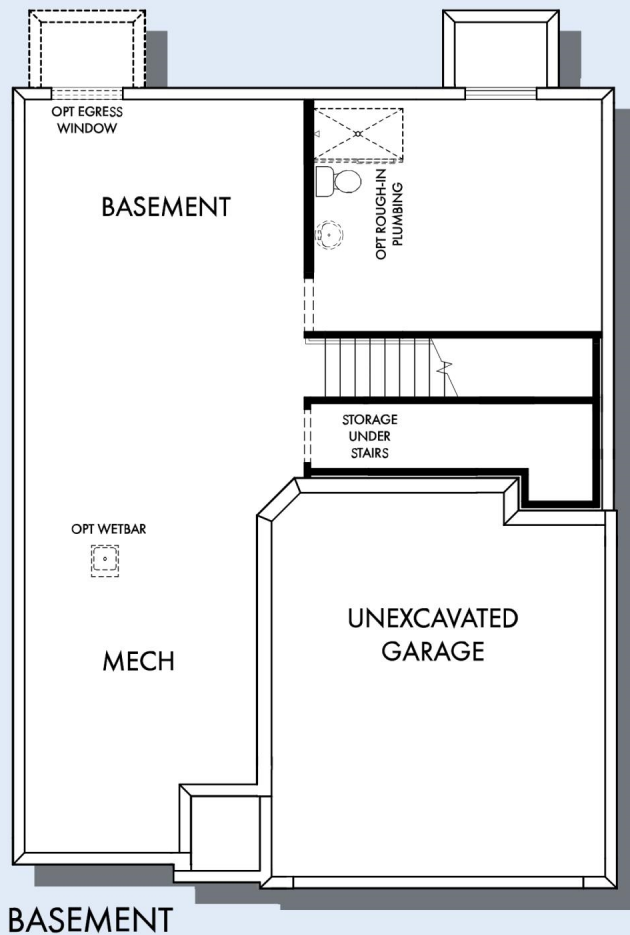
SECOND FLOOR

For additional options, please visit DavidWeekleyHomes.com

THE PRYOR



OPTIONAL GAME ROOM WITH BEDROOM 5 AND BATH 4 AT BASEMENT



For additional options, please visit DavidWeekleyHomes.com

See a David Weekley Homes Sales Consultant for details. Prices, plans, dimensions, features, specifications, materials, and availability of homes or communities are subject to change without notice or obligation. Illustrations are artist's depictions only and may differ from completed improvements. Copyright © 2026 David Weekley Homes - All Rights Reserved. Minneapolis/St. Paul, MN

DavidWeekleyHomes.com

