

# THE CHISOLM



Exterior A

2,040 - 4,111 sq. ft.

3 - 6 Bedrooms

2 - 3 Full Baths

2 Car Garage



Exterior B

Shane



**We're living our fairytale thanks to David Weekley**

We can't say enough about the level of quality and care we received while building our home. Our builder was with us every step of the way to make sure our every need and desire was being met! The team truly went above and beyond at every turn to give us the home of our dreams! We will definitely recommend David Weekley to anyone looking to build a new home!

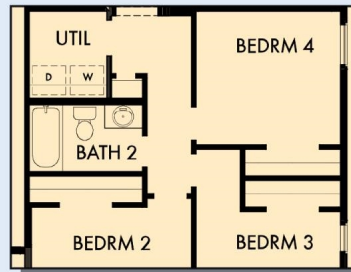
**David Weekley  
Homes**

# THE CHISOLM

2,040 - 4,111 sq. ft. • 3 - 6 Bedrooms • 2 - 3 Full Baths • 2 Car Garage



FIRST FLOOR



OPTIONAL BEDROOM 4 AT RETREAT



OPTIONAL DROP-IN TUB WITH SEPARATE SHOWER AT OWNER'S BATH



OPTIONAL MUDROOM



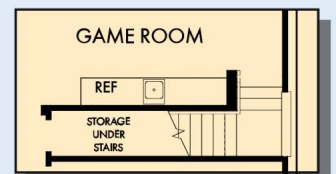
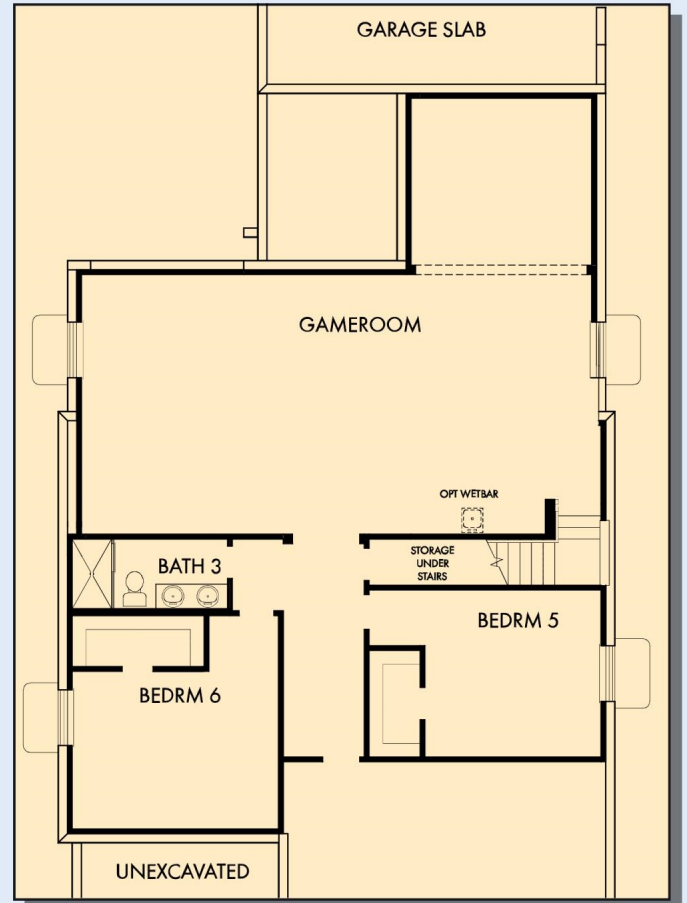
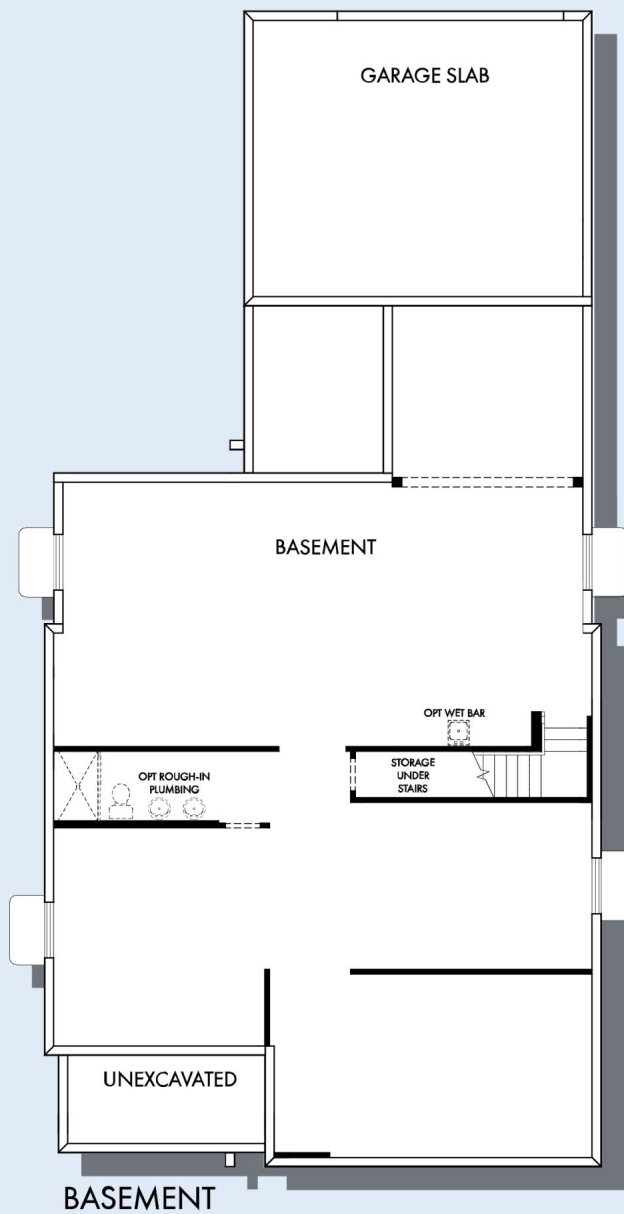
OPTIONAL FREE STANDING TUB WITH SEPARATE SHOWER AT OWNER'S BATH



OPTIONAL SUPER SHOWER AT OWNER'S BATH



# THE CHISOLM



For additional options, please visit [DavidWeekleyHomes.com](http://DavidWeekleyHomes.com)

**DavidWeekleyHomes.com**



See a David Weekley Homes Sales Consultant for details. Prices, plans, dimensions, features, specifications, materials, and availability of homes or communities are subject to change without notice or obligation. Illustrations are artist's depictions only and may differ from completed improvements. Copyright © 2025 David Weekley Homes - All Rights Reserved. Salt Lake City, UT