

THE POPPY



Exterior A

2,546 sq. ft.

4 - 5 Bedrooms

3 Full Baths

2 Car Garage



Exterior B

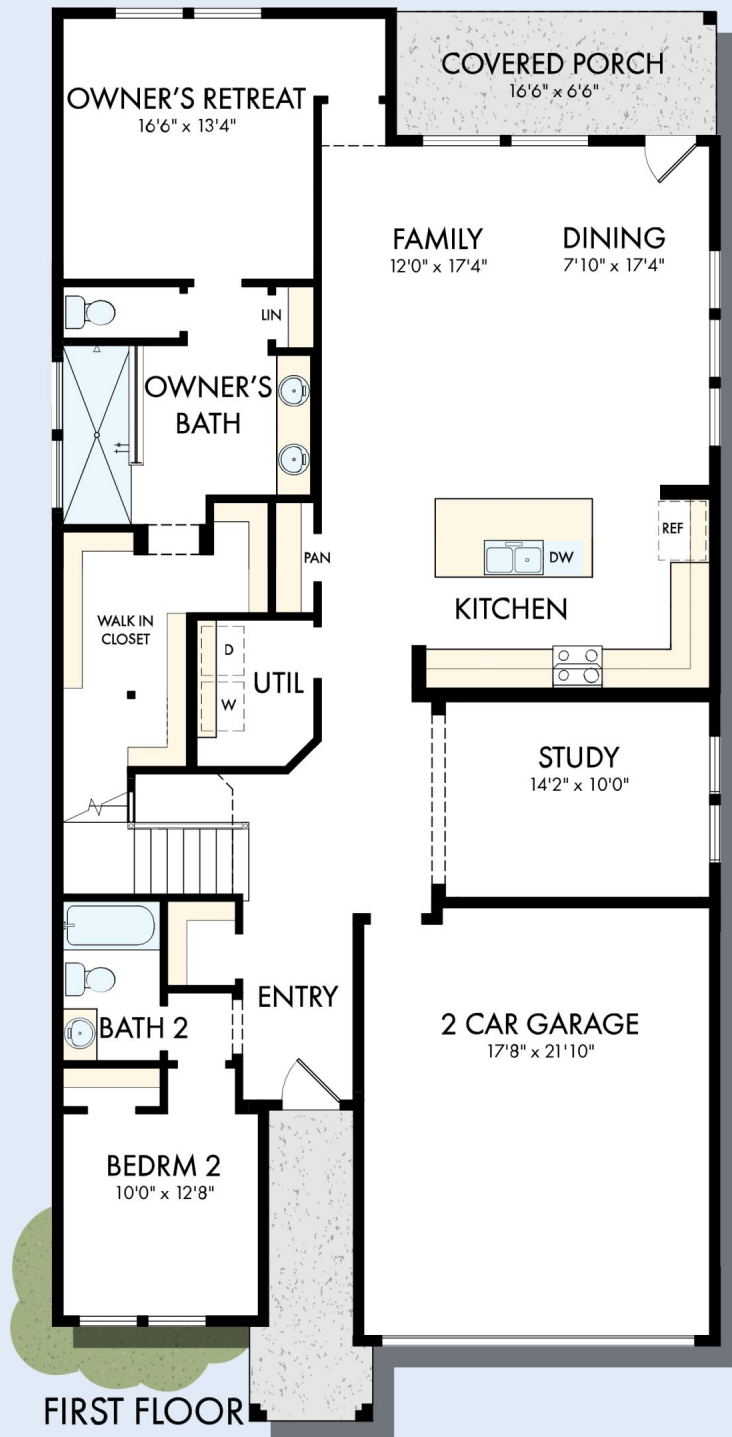


Exterior X

David Weekley
Homes

THE POPPY

2,546 sq. ft. • 4 - 5 Bedrooms • 3 Full Baths • 2 Car Garage



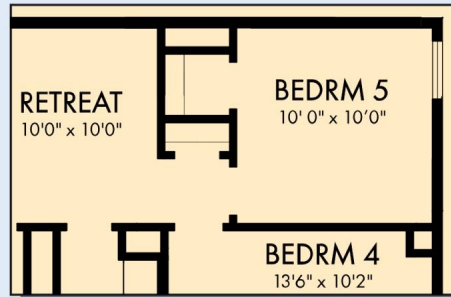
T287 in 2423 SAN

For additional options, please visit DavidWeekleyHomes.com

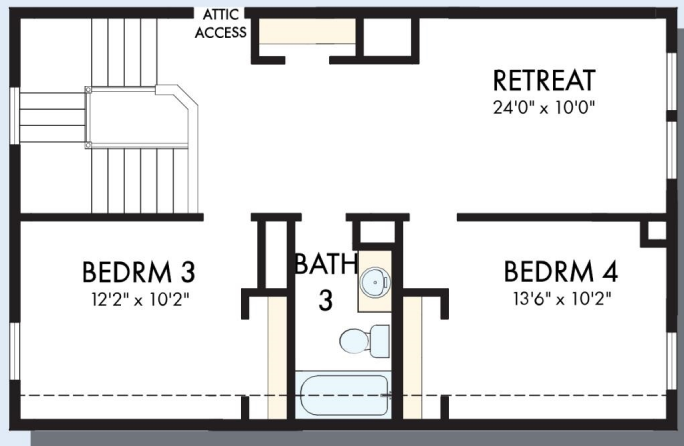
5/5/2026

DavidWeekleyHomes.com

THE POPPY



OPTIONAL BEDROOM 5 AT RETREAT



SECOND FLOOR

For additional options, please visit DavidWeekleyHomes.com

See a David Weekley Homes Sales Consultant for details. Prices, plans, dimensions, features, specifications, materials, and availability of homes or communities are subject to change without notice or obligation. Illustrations are artist's depictions only and may differ from completed improvements. Copyright © 2026 David Weekley Homes - All Rights Reserved. San Antonio, TX

DavidWeekleyHomes.com

